

RNAV (GPS) RWY 18  
PUTNAM COUNTY RGNL (GPC)

**MISSED APPROACH:**  
Climb to 2500 direct  
EYUTA and hold.

ALLOE

2500  
119°  
(12)

Procedure NA for arrivals  
at ALLOE on V7 northbound.

(IAF) PURTE

2500 NoPT  
(6.3)

094°

4 NM

004°

184°

(IF/IAF) FAMTU

2500 NoPT  
(6.3)

274°

(IAF) GALPE

2500

184°  
(5.9)

(FAF) JOBKO

MAQUI  
1.6 NM to  
RW18

935±

RW18

914

1069±

1130

MISSED APCH FIX

EYUTA

004°

184°

4 NM

Procedure NA for arrival  
on VHP VORTAC airway  
radials 209 CW 311.

2600  
275°  
(14.1)

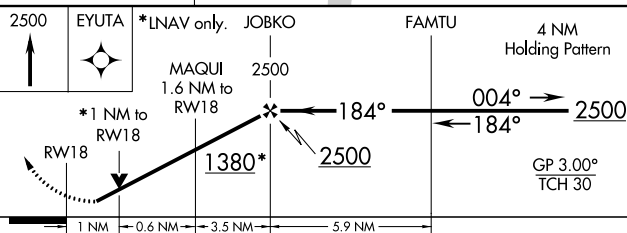
1526

BRICKYARD  
VHP

MSA RW18 25 NM

2600

ELEV 842	TDZE 842
184° to RW18	81



EC-2, 31 DEC 2020 to 28 JAN 2021