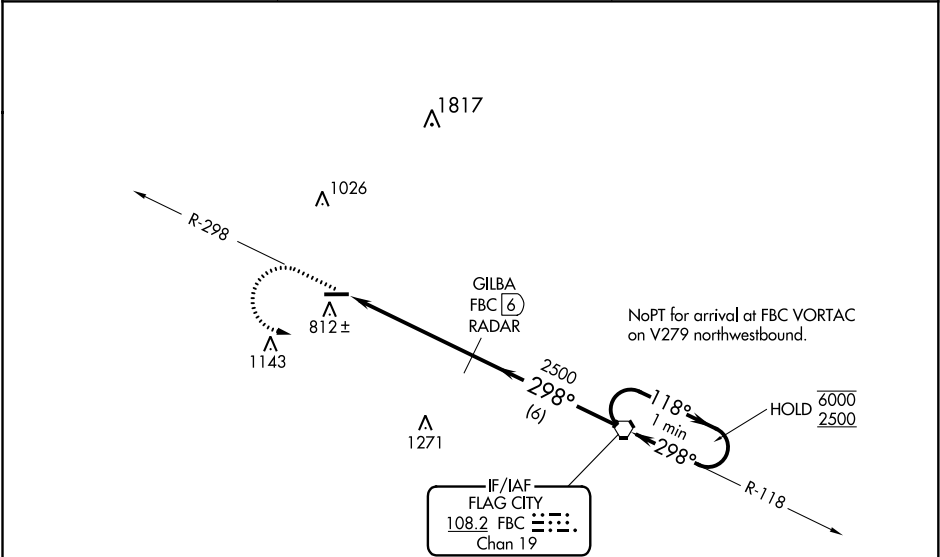


VORTAC FBC	APP CRS	Rwy Idg	4477
108.2	298°	TDZE	763
Chan 19		Apt Elev	763

VOR RWY 27
PUTNAM COUNTY (OWX)

RADAR or DME required.	MISSED APPROACH: Climb to 2500 on FBC VORTAC R-298 then left turn direct FBC VORTAC and hold.
▼ Rwy 27 helicopter visibility reduction below 1 SM NA. ▲ NA Straight-in, Circling Rwy 27 NA at night.	

AWOS-3 120.525	TOLEDO APP COM 120.8 317.55	UNICOM 122.7 (CTAF) 0
-------------------	--------------------------------	--------------------------



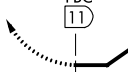


ELEV 763 TDZE 763

REIL Rwys 9 and 27 0
MIRL Rwy 9-27 0

FAF to MAP 5 NM

Knots	60	90	120	150	180
Min:Sec	5:00	3:20	2:30	2:00	1:40

<div>2500 FBC R-298</div> <div></div> <div><div>FBC</div><div></div></div>		<div>GILBA FBC (6) RADAR</div>	<div>FBC VORTAC</div> <div>One Minute Holding Pattern</div>	
<div><div>FBC (11)</div><div></div></div> <div><div>2500</div><div>298°</div><div>118° → 6000 ← 298° 2500</div></div>		<div>3.18° TCH 44</div>		
5 NM		6 NM		
CATEGORY	A	B	C	D
S-27	1220-1 457 (500-1)		NA	
CIRCLING	1220-1 457 (500-1)		NA	

EC-2, 31 DEC 2020 to 28 JAN 2021

EC-2, 31 DEC 2020 to 28 JAN 2021