

RNAV (GPS) RWY 9

PUTNAM COUNTY (OWX)

NA For uncompensated Baro-VNAV systems, LNAV/VNAV NA below -16°C or above 54°C. Rwy 9 helicopter visibility reduction below $\frac{3}{4}$ SM NA. Baro-VNAV and VDP NA when using Findlay altimeter setting. When local altimeter setting not received, use Findlay altimeter setting and increase all DAs/MDAs 40 feet.

MISSED APPROACH:
Climb to 3000 direct
CIVRO and hold.

AWOS-3 120.525	TOLEDO APP CON 120.8 317.55	UNICOM 122.7 (CTAF) 0
--------------------------	---------------------------------------	--

(IAF) TWERP

3000 NM (14.3)

125°

(IF/IAF) WIFES

095°

275°

4 NM

2500 NM (6.2)

095°

(FAF) ZEBIR

1009 NM

955 NM

1143 NM

ILEDE 2.5 NM to RW09

854± NM

812± NM

RW09

1817 NM

1026 NM

1271 NM

MISSED APCH FIX

4 NM

095°

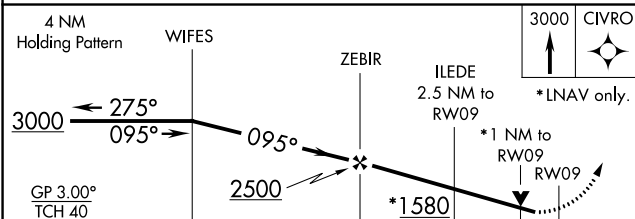
275°

CIVRO

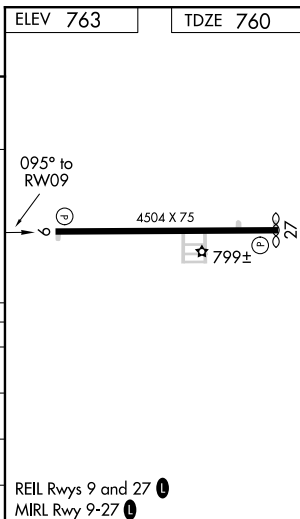
MSA RW09 25 NM

3000 NM

ELEV	763	TDZE	760
------	-----	------	-----



		6.2 NM		2.8 NM		1.5		1.0			
CATEGORY	A		B		C		D				
LPV DA	1048-1		288 (300-1)		NA						
RNAV/DA	1147-1 1/2		387 (400-1 1/2)		NA						
RNAV MDA	1120-1		360 (400-1)		NA						
CIRCLING	1200-1 437 (500-1)		1220-1 457 (500-1)		NA						



EC-2, 31 DEC 2020 to 28 JAN 2021