

APP CRS
049°

Rwy Idg
TDZE
890

Apt Elev
896

RNAV (GPS) RWY 5

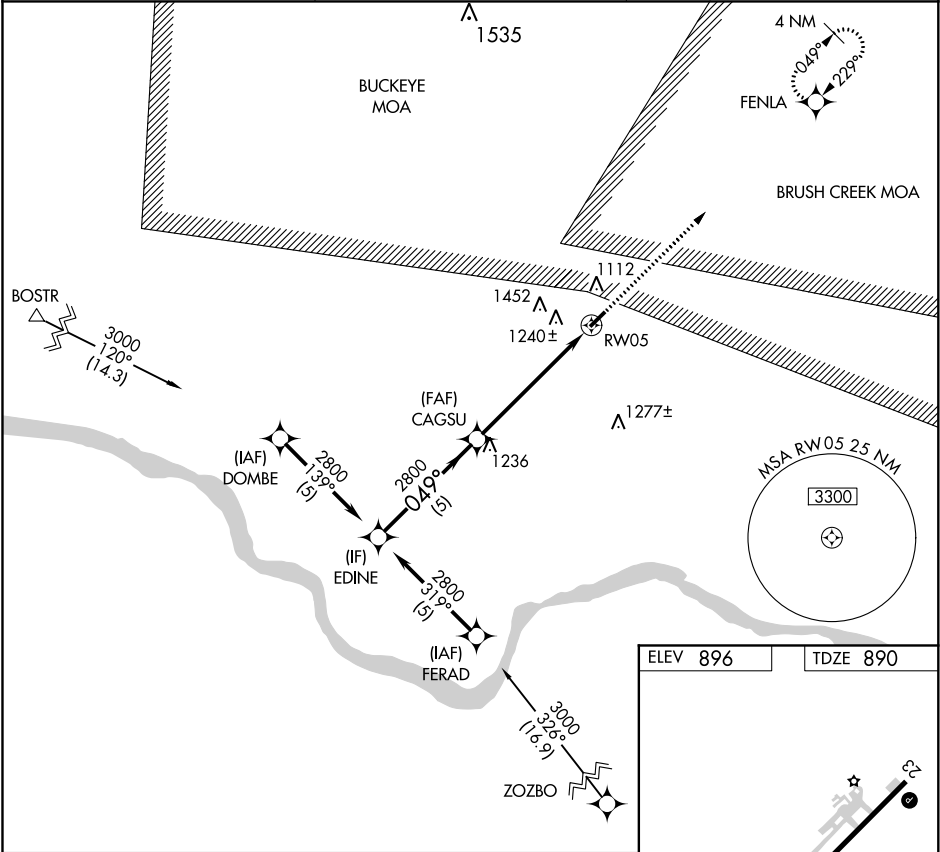
ALEXANDER SALAMON (A.M.T.)

RNP APCH.

Procedure NA at night. Rwy 5 helicopter visibility reduction below 1 SM NA.
Use Flemingsburg, Kentucky altimeter setting.

MISSED APPROACH: Climb to 2800 direct FENLA and hold.

| | | |
|------------------------------|---|---------------------------------|
| FGX AWOS-3 118.125 | INDIANAPOLIS CENTER 135.575 290.5 | UNICOM 122.8 (CTAF) 1 |
|------------------------------|---|---------------------------------|



Visual Segment - Obstacles.

EDINE

CAGSU

RW05

FENLA

| | | | | |
|----------|--------|-------------|-------------------------|----|
| CATEGORY | A | B | C | D |
| LNAV MDA | 1400-1 | 510 (600-1) | 1400-1½ 510 (600-1½) | NA |

ELEV 896

TDZE 890

REIL Rws 5 and 23 1

MIRL Rwy 5-23 1