
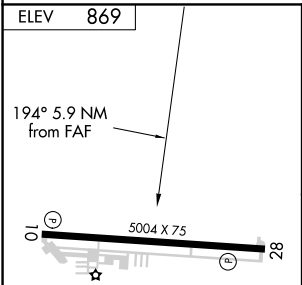
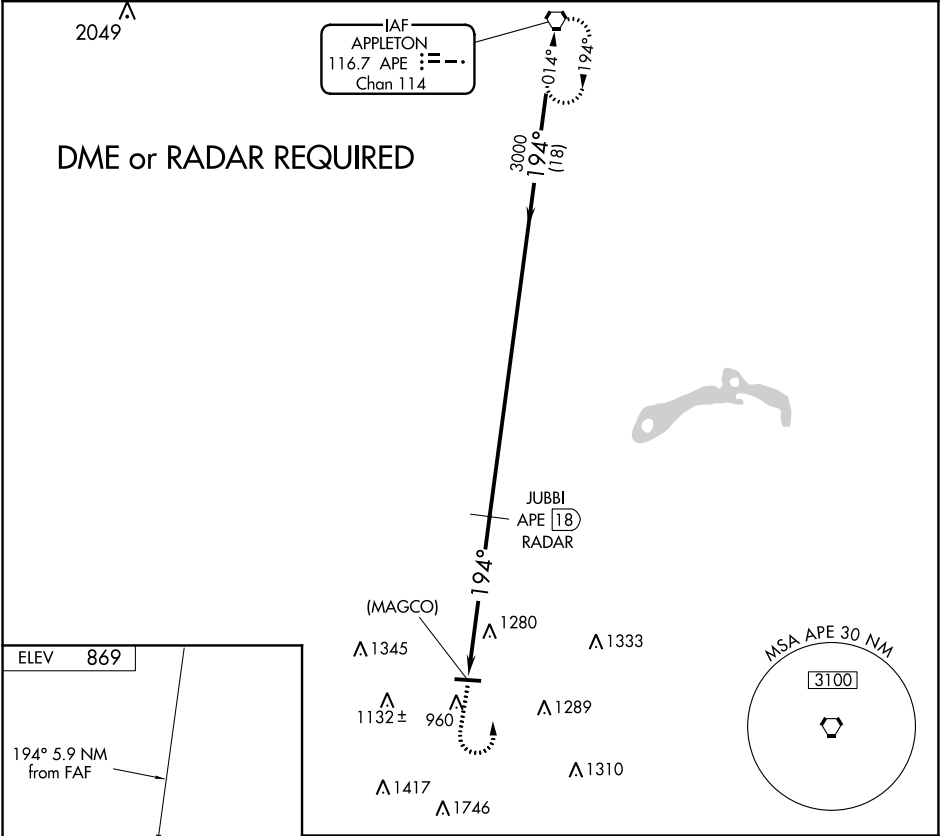




VORTAC APE 116.7 Chan 114	APP CRS 194°	Rwy Idg TDZE Apt Elev N/A N/A 869
---	------------------------	---

VOR or GPS-A
FAIRFIELD COUNTY (LHQ)

  NA	MISSED APPROACH: Climb to 2000, then climbing left turn to 3000 direct APE VORTAC and hold.
---	---

ASOS 118.375	COLUMBUS APP CON 134.0 279.6	CLNC DEL 121.65	UNICOM 122.725 (CTAF) 
------------------------	--	---------------------------	---



<div>REIL Rwys 10 and 28 </div> <div>MIRL Rwy 10-28 </div>						<div><div><div>(MAGCO) APE 23.9</div><div><div><div></div><div></div><div></div></div><div><div></div><div></div><div></div></div></div><div><div>5.9 NM</div><div>18 NM</div></div><div><div>3000</div><div>194°</div><div>3000</div></div><div>Procedure Turn NA</div></div></div>				
						FAF to MAP 5.9 NM				
Knots	60	90	120	150	180	CATEGORY	A	B	C	D
Min:Sec	5:54	3:56	2:57	2:22	1:58	CIRCLING	1580-1 711 (800-1)	1580-1¼ 711 (800-1¼)	1640-2¼ 771 (800-2¼)	NA

EC-2, 31 DEC 2020 to 28 JAN 2021

EC-2, 31 DEC 2020 to 28 JAN 2021