

WAAS CH 97701 W10A	APP CRS 100°	Rwy Idg TDZE 857 Apt Elev 868	5004
--	------------------------	---	-------------

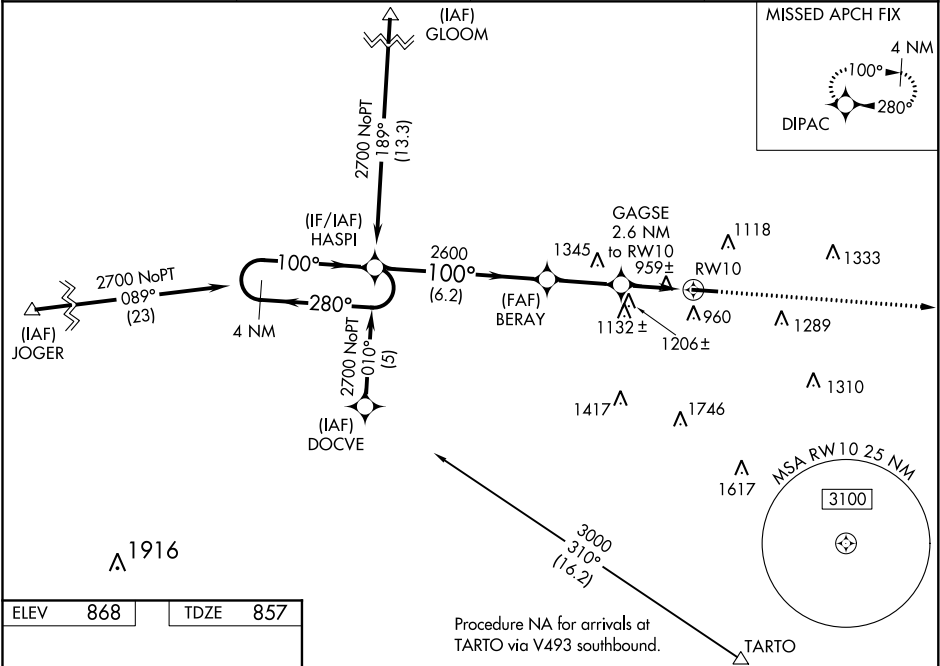
RNAV (GPS) RWY 10
FAIRFIELD COUNTY (LHQ)

RNP APCH.

Baro-VNAV and VDP NA when using Rickenbacker Intl altimeter setting. For uncompensated Baro-VNAV systems, LNAV/VNAV NA below -16°C or above 54°C. When local altimeter setting not received, use Rickenbacker Intl altimeter setting and increase all DAs 48 feet, and all MDAs 60 feet, and increase LPV, LNAV/VNAV all Cats and Circling Cat C visibility ¼ mile. Rwy 10 helicopter visibility reduction below ¾ SM NA.

MISSED APPROACH:
Climb to 2800 direct
DIPAC and hold.

ASOS 118.375	COLUMBUS APP CON 134.0 279.6	CLNC DEL 121.65	UNICOM 122.725 (CTAF) 0
------------------------	--	---------------------------	--



ELEV 868	TDZE 857
-----------------	-----------------

4 NM Holding Pattern

GP 3.00° TCH 40

100° to RW10

5004 X 75

HASPI

BERAY

GAGSE 2.6 NM to RW10

*1.8 NM to RW10

RW10

2800 DIPAC

*LNAV only.

CATEGORY	A	B	C	D
LPV DA	1170-1	313 (400-1)		NA
LNAV/VNAV DA	1291-1 ½	434 (500-1 ½)		NA
LNAV MDA	1460-1	603 (600-1)	1460-1 ¾ 603 (600-1 ¾)	NA
CIRCLING	1520-1 652 (700-1)	1540-1 672 (700-1)	1560-2 692 (700-2)	NA