

WAAS
CH **82327**
W36A

APP CRS
002°

Rwy Idg
TDZE **681**
Apt Elev **698**

RNAV (GPS) RWY 36

JASPER COUNTY (RZL)

RNP APCH.

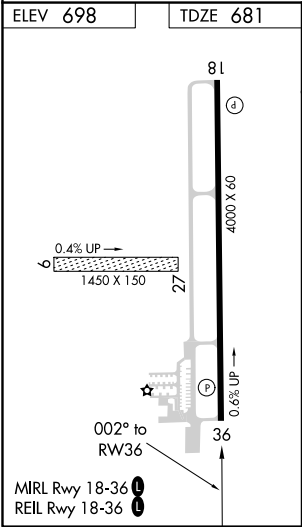
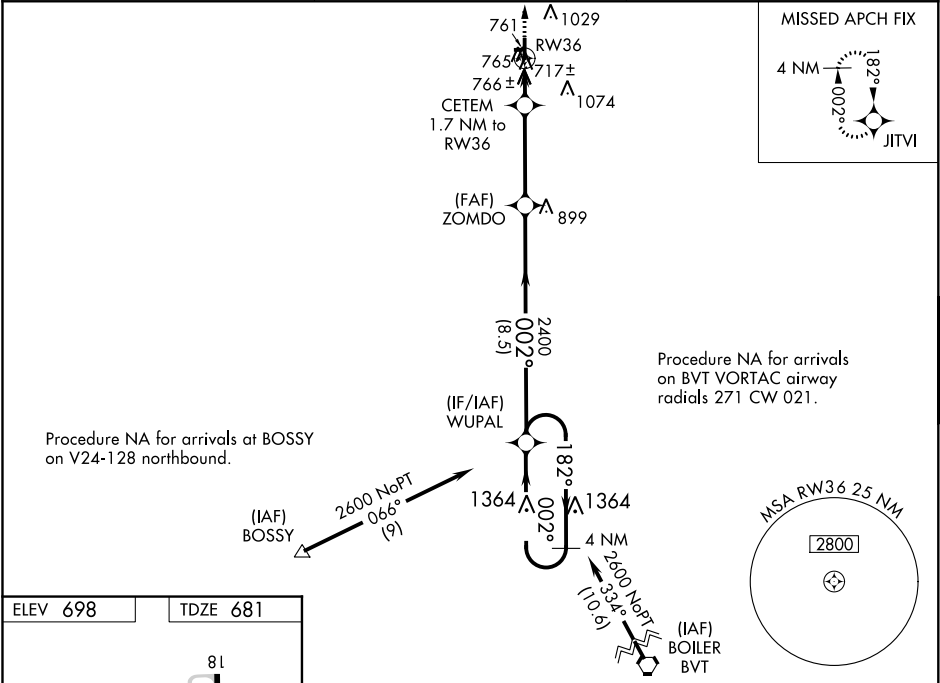
Baro-VNAV NA when using Knox altimeter setting. For uncompensated Baro-VNAV systems, LNAV/VNAV NA below -22°C or above 54°C. When local altimeter setting not received use Knox altimeter setting and increase all DA 78 feet and all MDA 80 feet, increase LPV and LNAV/VNAV all Cats visibility ⅛ mile and LNAV and Circling Cat C visibility ¼ mile. Rwy 36 helicopter visibility reduction below 1 SM NA. Circling NA to Rwy 9 and 27.

MISSED APPROACH:
Climb to 2600 direct
JITVI and hold.

AWOS-3P
119.175

CHICAGO CENTER
132.5 284.7

UNICOM
122.8 (CTAF) 0



	2600	JITVI		WUPAL	4 NM Holding Pattern
	*LNAV only.	CETEM 1.7 NM to RW36	ZOMDO 2400	182°	2600
	RW36	*1240	002°	2400	GP 3.00° TCH 40
	1.7	3.6 NM	8.5 NM		
CATEGORY	A	B	C	D	
LPV DA		931-1 250 (300-1)		NA	
LNAV/ VNAV DA		947-1 266 (300-1)		NA	
LNAV MDA		1020-1 339 (400-1)		NA	
CIRCLING	1120-1 422 (500-1)	1340-1 642 (700-1)	1340-1¾ 642 (700-1¾)	NA	