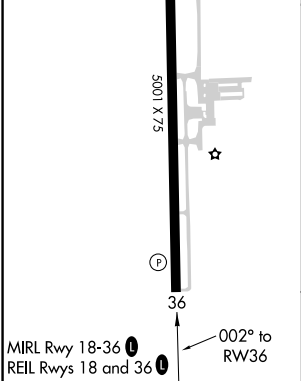
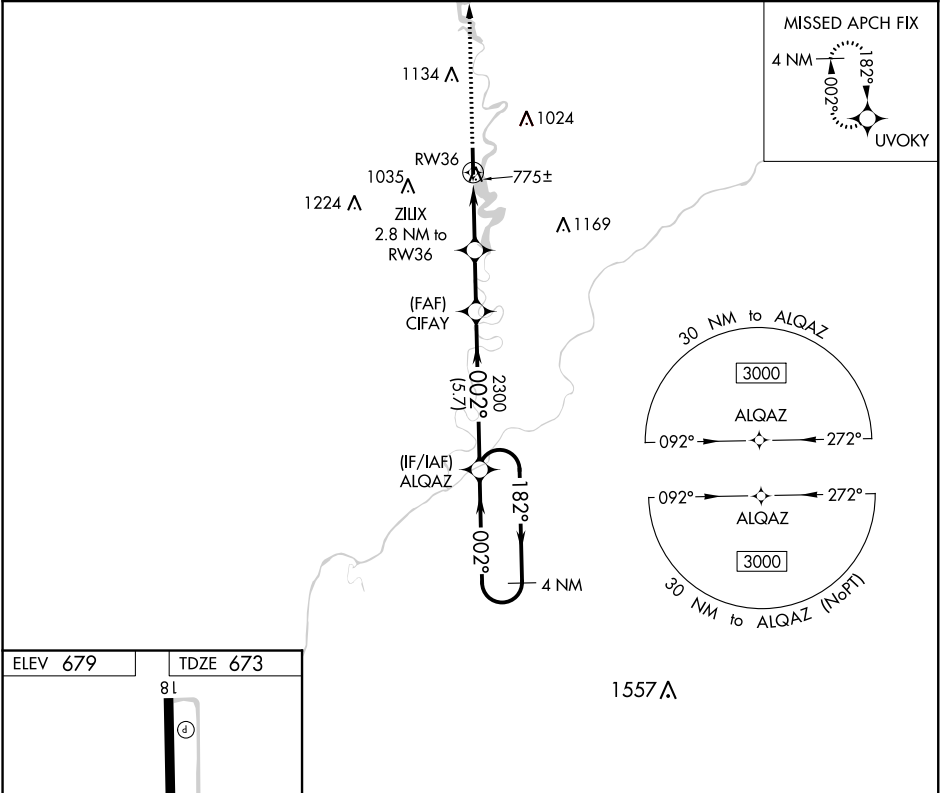



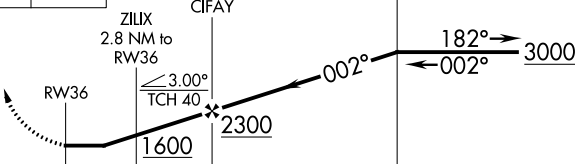

APP CRS	Rwy Idg	5001
002°	TDZE	673
	Apt Elev	679

RNAV (GPS) RWY 36
WHITE COUNTY (MCX)

<div><div></div><div></div></div> <div>DME/DME RNP-0.3 NA. Straight-in Rwy 36 NA at night, Circling Rwy 36 NA at night. Rwy 36 helicopter visibility reduction below 1 SM NA.</div>	MISSED APPROACH: Climb to 3000 direct UVOKY and hold.
-------------------------------------------------------------------------------------------------------------------------------------------------------------------------------------	-------------------------------------------------------

AWOS-3P 124.05	GRISCOM APP CON ★ 123.85 291.675	UNICOM 122.8 (CTAF) 0
-------------------	-------------------------------------	--------------------------



3000 ↑	UVOKY 	VGSI and descent angles not coincident (VGSI Angle 4.00/TCH 25).		4 NM Holding Pattern
				
CATEGORY	A	B	C	D
LNAV MDA	1040-1 367 (400-1)			
 CIRCLING	1200-1 521 (600-1)	1340-1 661 (700-1)	1500-2½ 821 (900-2½)	1500-2¾ 821 (900-2¾)

EC-2, 31 DEC 2020 to 28 JAN 2021

EC-2, 31 DEC 2020 to 28 JAN 2021