

APP CRS
081°

Rwy Idg
TDZE
913

Apt Elev
913

RNP APCH.

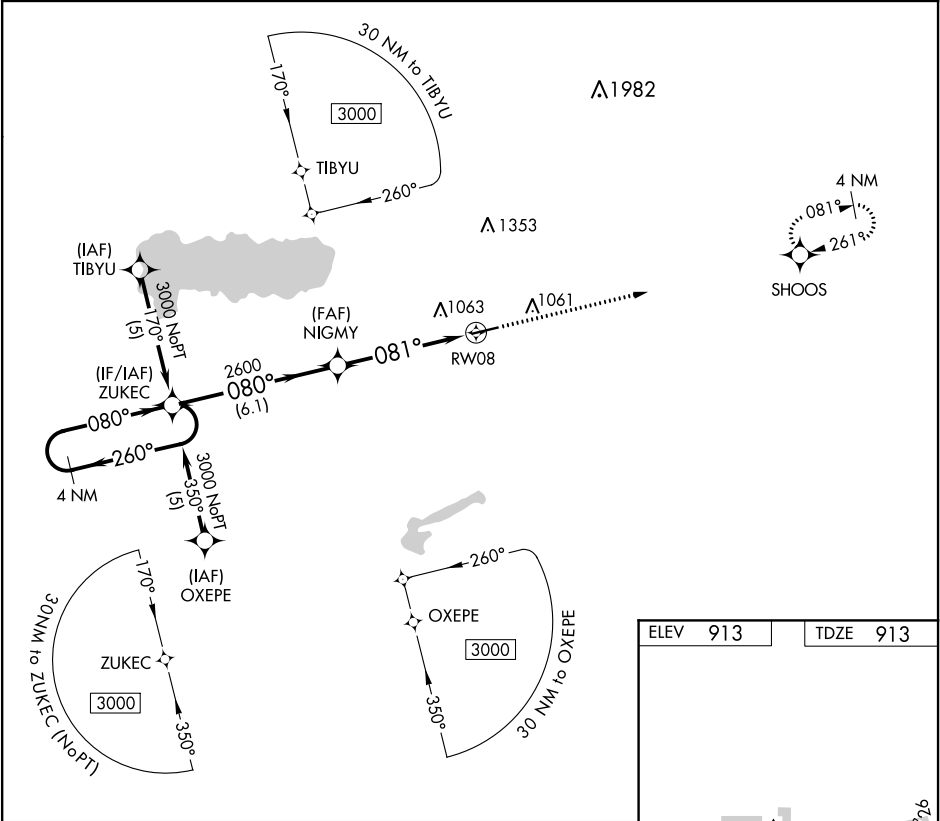
▼

NA

Rwy 8 helicopter visibility reduction below 1 SM NA. When local altimeter setting not received, use Lima altimeter setting and increase all MDA 60 feet, increase LNAV Cat C visibility ¼ mile.

MISSED APPROACH: Climb to 3000 direct SHOOS and hold.

AWOS-3 128.325	COLUMBUS APP CON 118.425 294.5	UNICOM 122.8 (CTAF)	122.7 0
--------------------------	--	-------------------------------	----------------



4 NM Holding Pattern

3000

260°

080°

ZUKEC

080°

NIGMY

2600

081°

RW08

6.1 NM

5.1 NM

3000

SHOOS

3.04°

TCH 40

5500 X 100

081° to RW08

CATEGORY	A	B	C	D
LNAV MDA	1380-1	467 (500-1)	1380-1¼ 467 (500-1¼)	NA

MIRL Rwy 8-26 0

REIL Rwys 8 and 26 0