

WAAS
CH **72907**
W26A

APP CRS
261°

Rwy Idg
TDZE **910**
Apt Elev **913**

RNAV (GPS) RWY 26

NEIL ARMSTRONG (AXV)

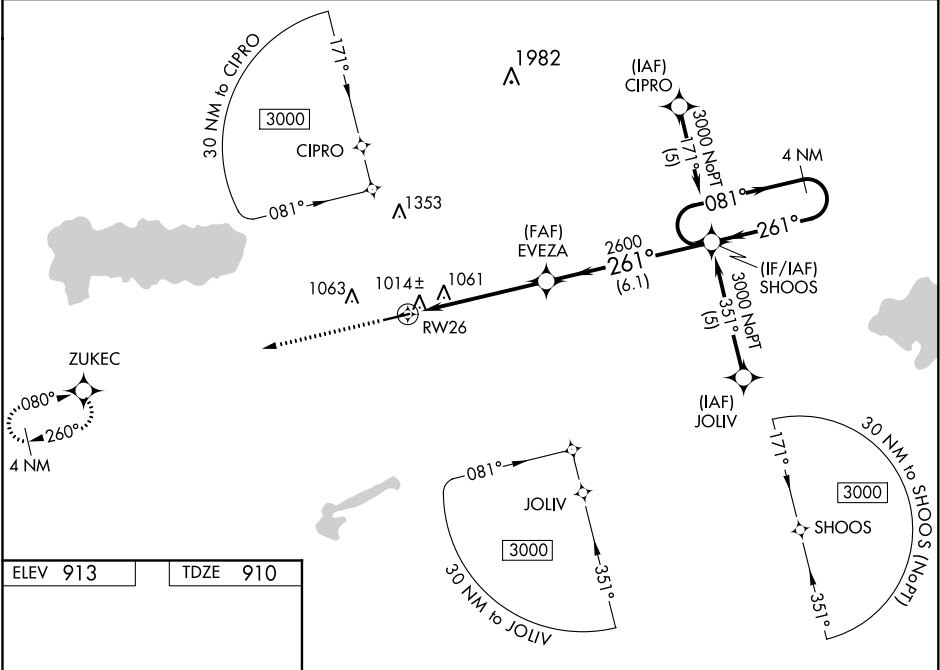
RNP APCH.

NA

Baro-VNAV NA when using Lima altimeter setting. For uncompensated Baro-VNAV systems, LNAV/VNAV NA below -16°C (4°F) or above 54°C (130°F). Rwy 26 helicopter visibility reduction below 1 SM NA. When local altimeter setting not received, use Lima altimeter setting and increase LPV DA to 1291, LNAV/VNAV DA to 1324, and all MDA 60 feet, increase LNAV/VNAV visibility all Cats ¼ mile. VDP NA when using Lima altimeter setting.

MISSED APPROACH:
Climb to 3000 direct
ZUKEC and hold.

AWOS-3 128.325	COLUMBUS APP CON 118.425 294.5	UNICOM 122.8 (CTAF)	122.7
--------------------------	--	-------------------------------	--------------



ELEV **913**

TDZE **910**

3000

ZUKEC

261° to RW26

5500 X 100

RW26

EVEZA

2600

SHOOS

4 NM Holding Pattern

3000

GP 3.00°
TCH 40

1.5 NM

3.6 NM

6.1 NM

CATEGORY	A	B	C	D
LPV DA	1241-1¼	331 (400-1¼)		NA
LNAV/VNAV DA	1274-1¼	364 (400-1¼)		NA
LNAV MDA	1440-1	530 (600-1)	1440-1½ 530 (600-1½)	NA

MIRL Rwy 8-26

REIL Rwy 8 and 26

WAPAKONETA, OHIO

Orig-B 07NOV19

40°30'N-84°18'W

NEIL ARMSTRONG (AXV)

RNAV (GPS) RWY 26