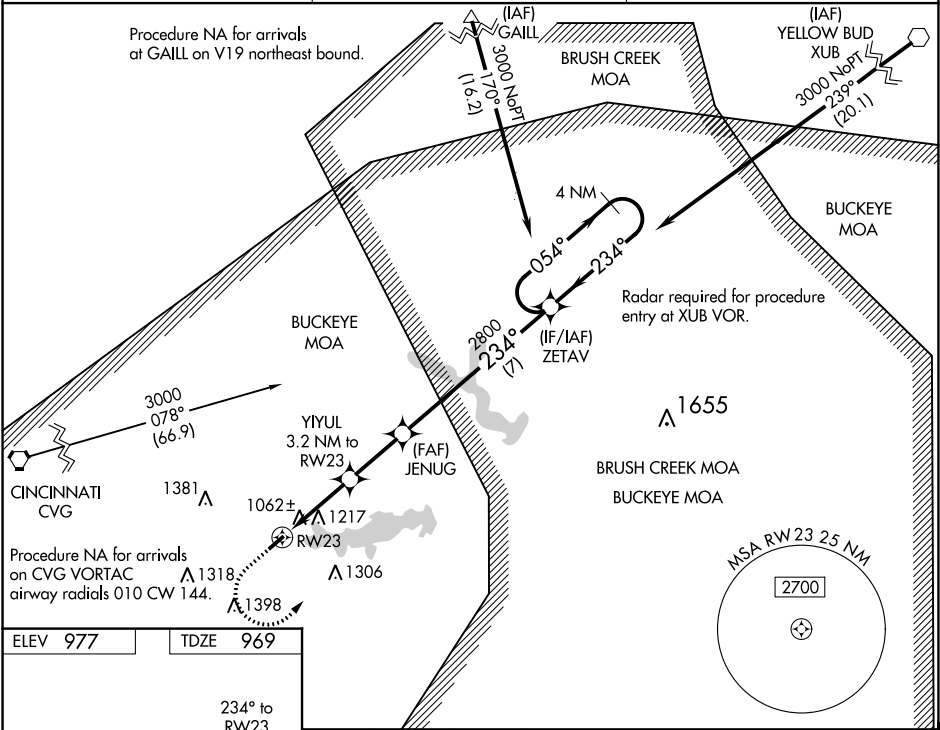


WAAS CH 97630 W23A	APP CRS 234°	Rwy Idg TDZE 969 Apt Elev 977
--	------------------------	---

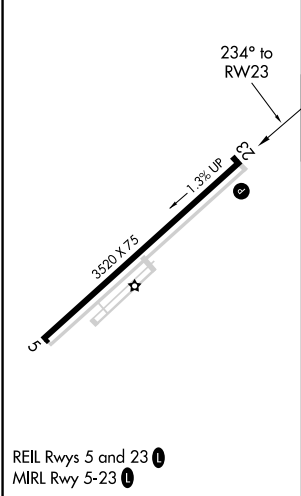
RNAV (GPS) RWY 23
HIGHLAND COUNTY (HOC)

<p>⚠ DME/DME RNP-0.3 NA. Visibility reduction by helicopters NA. When local altimeter setting not received, use Wilmington Air Park altimeter setting and increase all MDA 60 feet. increase LNAV Cat C,D visibility 1/8 mile, increase LP Cat C,D visibility 1/4 mile, and increase Circling Cat C visibility 1/8 mile. When VGSI inop, Straight-in/Circling Rwy 23 procedure NA at night. Circling to Rwy 05 NA at night.</p>	<p>MISSED APPROACH: Climb to 1600 then climbing left turn to 3000 direct ZETAV and hold.</p>
--	---

AWOS-3 118.175	INDIANAPOLIS CENTER 135.575 290.5	UNICOM 123.05 (CTAF)
--------------------------	---	--------------------------------



ELEV 977	TDZE 969
-----------------	-----------------



1600	3000	ZETAV	VGSI and descent angles not coincident (VGSI Angle 4.00/TCH 32).	4 NM Holding Pattern
YIYUL 3.2 NM to RW23	JENUG	2800	2000	3000
3.00° TCH 55	234°	054°	234°	3000
3.2 NM	2.5 NM	7 NM		
CATEGORY	A	B	C	D
LP MDA	1320-1	351 (400-1)	1320-1½	351 (400-1½)
LNAV MDA	1480-1	511 (600-1)	1480-1½	511 (600-1½)
CIRCLING	1500-1 523 (600-1)	1520-1 543 (600-1)	1520-1½ 543 (600-1½)	1540-2 563 (600-2)

EC-2, 31 DEC 2020 to 28 JAN 2021

EC-2, 31 DEC 2020 to 28 JAN 2021