

APP CRS	Rwy Idg	4000
275°	TDZE	785
	Apt Elev	785

RNAV (GPS) RWY 27

VAN WERT COUNTY (VNW)

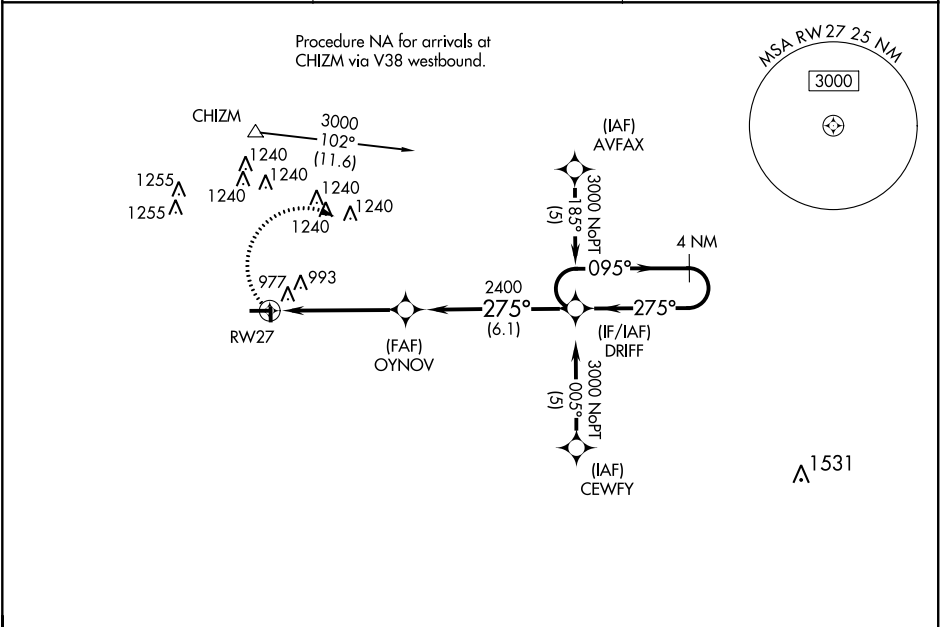
▼

▲

DME/DME RNP-0.3 NA. When local altimeter setting not received, use Fort Wayne altimeter setting and increase all MDA 80 feet and increase LNAV Cat C and D visibility ¼ mile and Circling Cat C visibility ¼ mile. VDP NA when using Fort Wayne altimeter setting.

MISSED APPROACH: Climbing right turn to 3000 direct DRIFT and hold.

AWOS-3 125.175	FORT WAYNE APP CON 127.2 284.6	UNICOM 123.0 (CTAF) 0
-------------------	-----------------------------------	--------------------------



3000

DRIFT

1.4 NM to RW27

RW27

3.04° TCH 40

1.4

3.5 NM

6.1 NM

Procedure NA for arrivals at BOOKS via V14 southwest bound.

DRIFT

4 NM Holding Pattern

095°

275°

3000

2400

OYNOV

275°

VGSI and descent angles not coincident (VGSI Angle 3.50/TCH 38).

CATEGORY	A	B	C	D
LNAV MDA	1280-1	495 (500-1)	1280-1¼ 495 (500-1¼)	1280-1½ 495 (500-1½)
CIRCLING	1340-1	555 (600-1)	1340-1½ 555 (600-1½)	1340-2 555 (600-2)

ELEV 785

TDZE 785

275° to RW27

81

4000 X 75

2558 X 95

252

36

MIRL Rwy 9-27 0

REIL Rwy 9 and 27 0