

| | | |
|--|------------------------|---|
| WAAS CH 87038 W19A | APP CRS 188° | Rwy Idg TDZE 685 Apt Elev 685 |
|--|------------------------|---|

RNAV (GPS) RWY 19

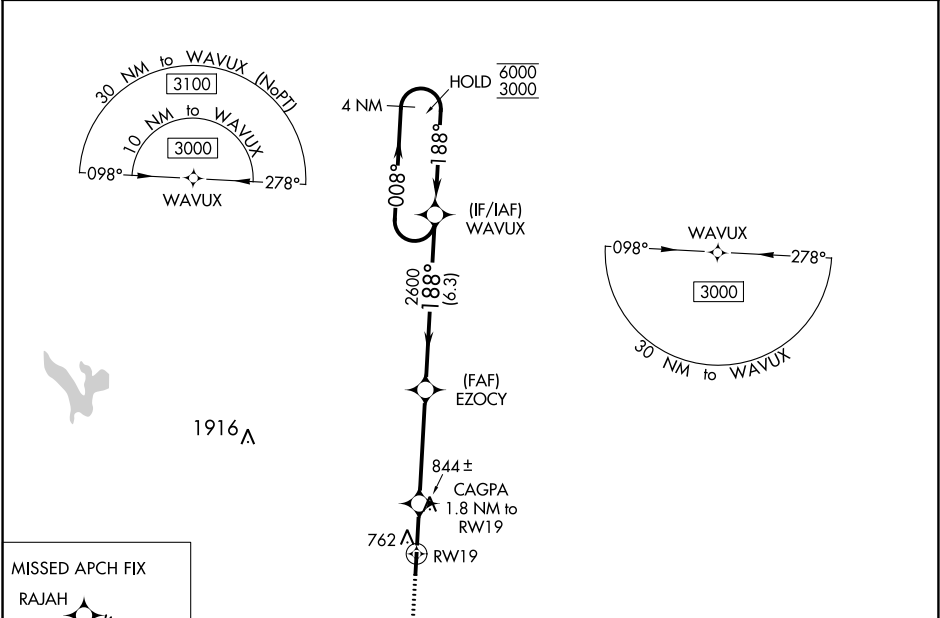
PICKAWAY COUNTY MEMORIAL (C'YO)

RNP APCH

Baro-VNAV and VDP NA when using Rickenbacker Intl altimeter setting. For uncompensated Baro-VNAV systems, LNAV/VNAV NA below -16°C or above 54°C. Use Chillycothe altimeter setting, when not received use Rickenbacker Intl altimeter setting and increase LPV DA to 985 feet, LNAV/VNAV DA to 1150 feet, and all visibilities ¼ SM. Increase all MDAs 60 feet and Cats C and D visibility ¼ SM. Circling Rwy 1 NA at night. Rwy 19 helicopter visibility reduction below ¾ SM NA.

MISSED APPROACH:
Climb to 3000 direct
RAJAH and hold.

| | | |
|------------------------------|--|---------------------------------|
| RZT AWOS-3 119.225 | COLUMBUS APP CON 134.0 279.6 | UNICOM 122.7 (CTAF) 0 |
|------------------------------|--|---------------------------------|



| | | | | | | | |
|--------------------------|-----------------------|-------------------------|-----------------------------|---|--|----------------------|--|
| MISSED APCH FIX RAJAH | | BUCKEYE MOA | | VGSI and RNAV glidepath not coincident (VGSI Angle 3.00°/TCH 24°). | | 4 NM Holding Pattern | |
| 3000 RAJAH | | CAGPA 1.8 NM to RW19 | | EZOCY | | GP 3.00° TCH 40 | |
| *LNAV only. | | *1.2 NM to RW19 | | *1280 | | 6000 3000 | |
| RW19 | | RW19 | | RW19 | | RW19 | |
| 1.2 NM | | 0.6 NM | | 4.1 NM | | 6.3 NM | |
| CATEGORY | A | B | C | D | | | |
| LPV DA | 935-7/8 | | 250 (300-7/8) | | | | |
| LNAV/VNAV DA | 1100-13/8 | | 415 (500-13/8) | | | | |
| LNAV MDA | 1100-1 | 415 (500-1) | 1100-13/8 | 415 (500-13/8) | | | |
| CIRCLING | 1180-1 495 (500-1) | 1200-1 515 (600-1) | 1300-13/4 615 (700-13/4) | 1340-2 655 (700-2) | | | |

ELEV 685

TDZE 685

188° to RW19

61

4346 X 75

0.5% UP

1

REIL Rwy 19 0

MIRL Rwy 1-19 0

EC-2, 31 DEC 2020 to 28 JAN 2021

EC-2, 31 DEC 2020 to 28 JAN 2021