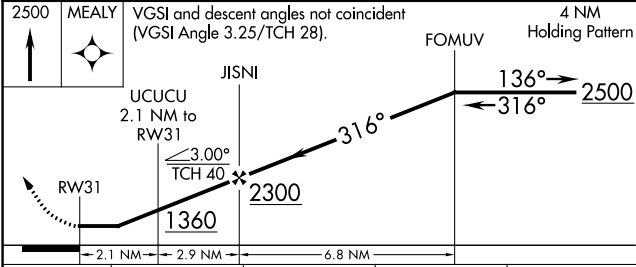
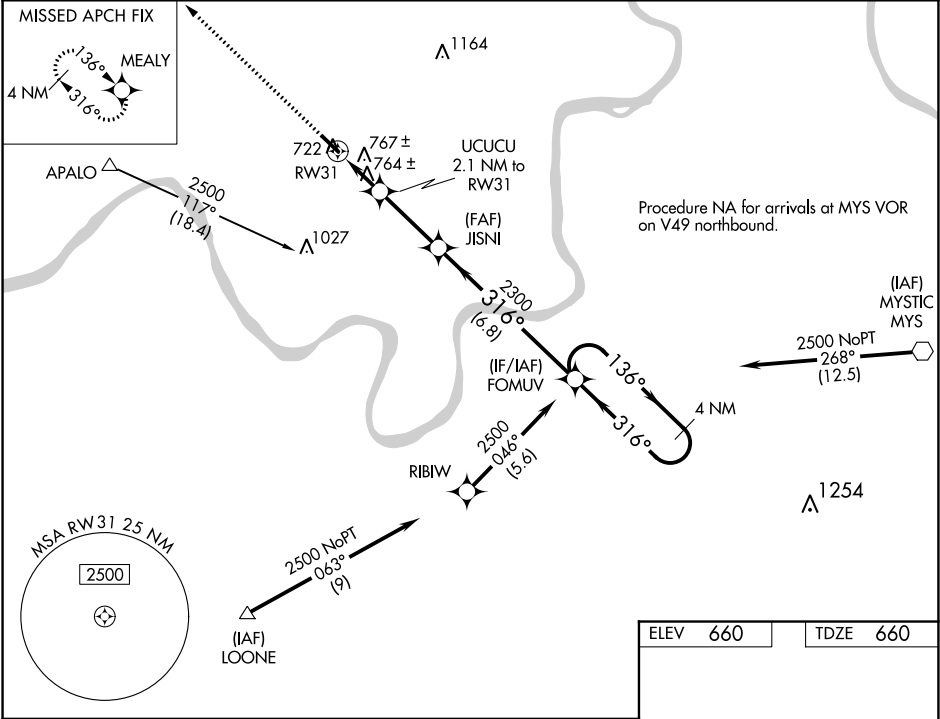


WAAS CH 93623 W31A	APP CRS 316°	Rwy Idg TDZE Apt Elev	4400 660 660
--	------------------------	-----------------------------	---

RNAV (GPS) RWY 31
PERRY COUNTY MUNI (TEL)

NA	When VGSI inop, Circling Rwy 13 NA at night. When VGSI inop, Straight-in/Circling Rwy 31 procedure NA at night. DME/DME RNP-0.3 NA. Visibility reduction by helicopters NA. Obtain local altimeter setting on CTAF; when not received, use Huntingburg altimeter setting and increase all MDA 80 feet and increase LP and LNAV Cat C visibility ¼ mile.	MISSED APPROACH: Climb to 2500 direct MEALY and hold.
-----------	---	---

EVANSVILLE APP CON * 124.025 290.9	UNICOM 122.7 (CTAF) 0
---	--



CATEGORY	A	B	C	D
LP MDA	1020-1	360 (400-1)		NA
LNAV MDA	1020-1	360 (400-1)		NA
CIRCLING	1080-1 420 (500-1)	1120-1 460 (500-1)	1120-1½ 460 (500-1½)	NA

