

WAAS CH <b>77735</b> <b>W09A</b>	APP CRS <b>093°</b>	Rwy Idg TDZE <b>1198</b> Apt Elev <b>1198</b>
--	------------------------	---

RNAV (GPS) RWY 9

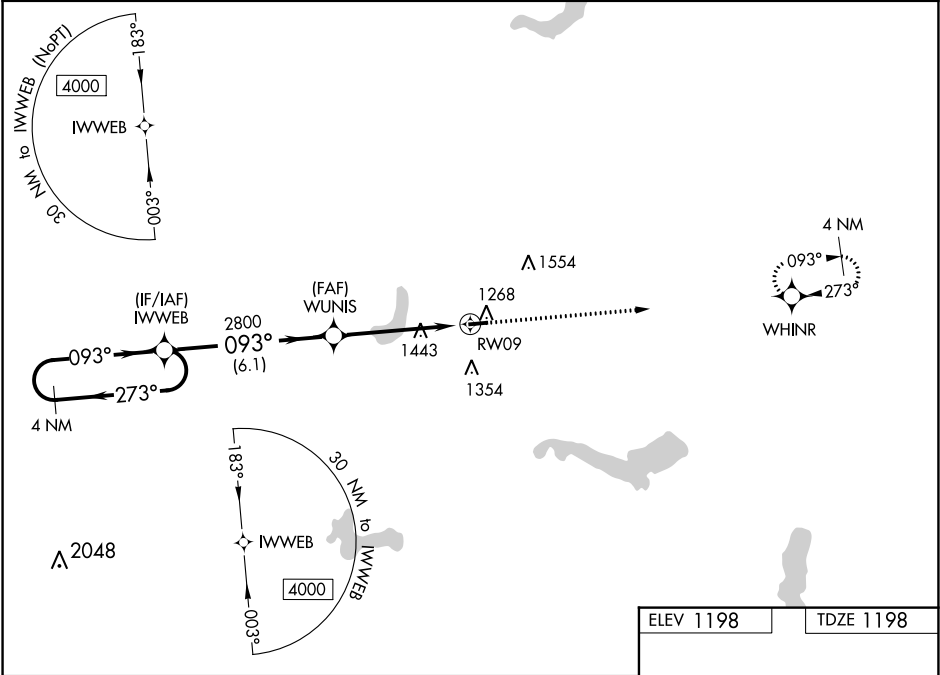
PORTAGE COUNTY (POV)

⚠

For uncompensated Baro-VNAV systems, LNAV/VNAV NA below -17°C (2°F) or above 54°C (130°F). DME/DME RNP-0.3 NA. When local altimeter setting not received, use Akron-Canton Rgnl altimeter setting and increase all DA 50 feet and all MDA 60 feet, increase LNAV Cat C visibility 1/8 mile, LNAV/VNAV all Cats and Circling Cat C visibility 1/4 mile. Baro-VNAV NA with Akron-Canton Rgnl altimeter setting. Helicopter visibility reduction below 1 SM NA. Night landing Cat C: Procedure NA.

MISSED APPROACH: Climb to 4000 direct WHINR and hold.

AWOS-3 <b>118.675</b>	CLEVELAND APP CON★ <b>118.6 371.875</b>	CLNC DEL <b>125.65</b>	UNICOM <b>123.05</b> (CTAF)
--------------------------	--	---------------------------	--------------------------------



4 NM Holding Pattern

GP 3.00° TCH 40

4000

273°

093°

093°

2800

WUNIS

2800

RW09

4000

WHINR

093° to RW09

3499 X 75

27

CATEGORY	A	B	C	D
LPV DA	1448-1	250 (300-1)		NA
LNAV/VNAV DA	1507-1	309 (400-1)		NA
LNAV MDA	1760-1	562 (600-1)	1760-1 5/8 562 (600-1 5/8)	NA
CIRCLING	1760-1 562 (600-1)	1800-1 602 (700-1)	1920-2 722 (800-2)	NA

REIL Rwy 9 and 27   
MIRL Rwy 9-27

EC-2, 31 DEC 2020 to 28 JAN 2021

EC-2, 31 DEC 2020 to 28 JAN 2021