

WAAS CH <b>63225</b> <b>W09A</b>	APP CRS <b>092°</b>	Rwy Idg <b>4002</b> TDZE <b>922</b> Apt Elev <b>925</b>
--	------------------------	---

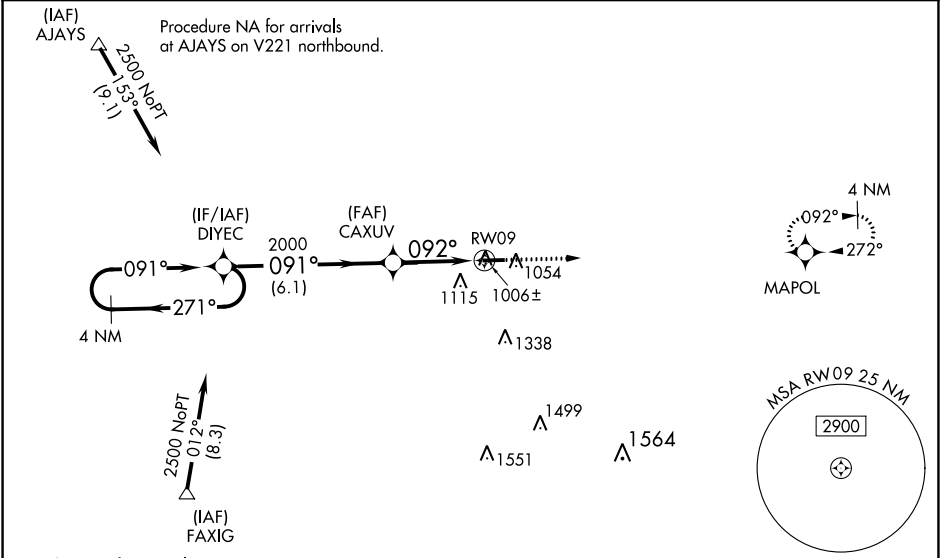
RNAV (GPS) RWY 9

PORTLAND MUNI (PLD)

Baro-VNAV NA when using Fort Wayne Intl altimeter setting. For uncompensated Baro-VNAV systems, LNAV/VNAV NA below -16°C (4°F) or above 54°C (130°F). DME/DME RNP-0.3 NA. Helicopter visibility reduction below 1 SM NA. When local altimeter setting not received, use Fort Wayne Intl altimeter setting and increase LPV DA to 1255, LNAV/VNAV DA to 1320 and all MDA 100 feet, increase LPV all Cats visibility ½ mile, LNAV/VNAV all Cats and LNAV Cat C visibility ¾ mile and Circling Cat C visibility ¼ mile. When VGSI inop, Straight-in/ Circling Rwy 9 procedure NA at night. When VGSI inop, Circling Rwy 27 NA at night.

MISSED APPROACH:  
Climb to 3000 direct  
MAPOL and hold.

AWOS-3 <b>124.675</b>	FORT WAYNE APP CON <b>132.15</b> (SE/NE) <b>284.6</b> <b>127.2</b> (SW/NW) <b>284.6</b>	UNICOM <b>122.8</b> (CTAF) <b>0</b>
--------------------------	---	--



Procedure NA for arrivals  
at FAXIG on V14 southwest bound.

ELEV 925

TDZE 922

4 NM Holding Pattern

GP 3.00° TCH 40

2500

271°

091°

DIYC

2000

092°

CAXUV

2000

3000

MAPOL

3.3 NM

6.1 NM

RWY 9

VGSI and RNAV glidepath not coincident  
(VGSI Angle 3.00/TCH 26).

092° to RWY 9

0981±

986±

0.3% UP

4002 X 75

1066

CATEGORY	A	B	C	D
LPV DA	1172-1	250 (300-1)		NA
LNAV/VNAV DA	1237-1	315 (400-1)		NA
LNAV MDA	1260-1	338 (400-1)		NA
CIRCLING	1480-1	555 (600-1)	1480-1½ 555 (600-1½)	NA

MIRL Rwy 9-27 **0**  
REIL Rwy 9 and 27 **0**