

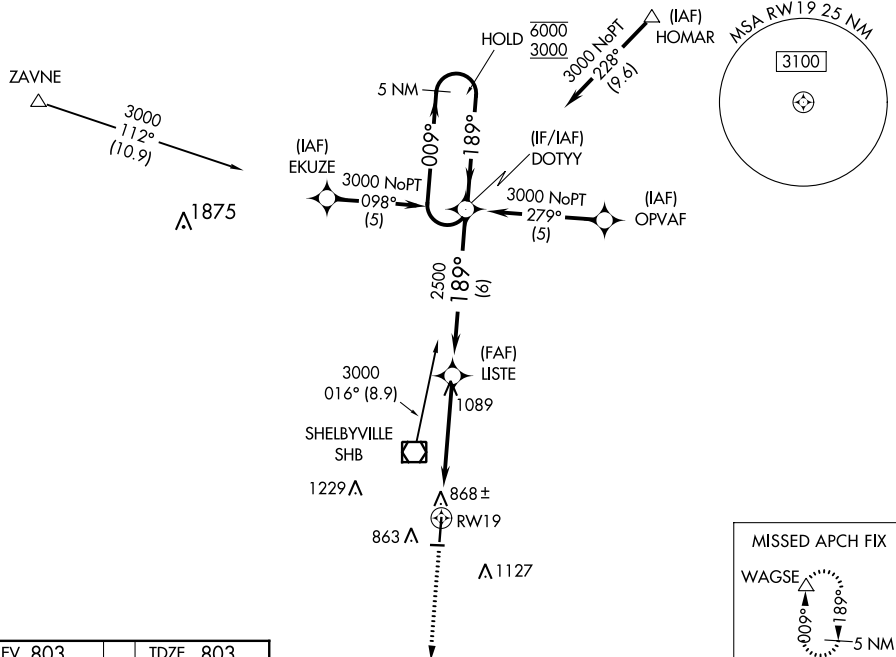
# RNAV (GPS) RWY 19

## SHELBYVILLE MUNI (GEZ)

**⚠** Circling Rwy 9, 27 NA at night. Baro-VNAV NA when using Indianapolis Intl altimeter setting. For uncompensated Baro-VNAV systems, LNAV/VNAV NA below -16°C or above 54°C. VDP NA when using Indianapolis Intl altimeter setting. When local altimeter setting not received, use Indianapolis Intl altimeter setting: increase LPV DA to 1152 feet and LNAV/VNAV DA to 1199 feet; increase all MDAs 60 feet and LNAV visibility Cats C and D  $\frac{1}{2}$  SM.

**MISSED APPROACH:**  
Climb to 3000 direct  
WAGSE and hold.

ASOS <b>121.55</b>	INDIANAPOLIS APP CON <b>127.15 317.8</b>	UNICOM <b>122.8 (CTAF) 0</b>
-----------------------	---	---------------------------------



ELEV 803

189° to RW19

61

$\Delta 876 \pm$

5000 X 100

0.4% UP

2671 X 190

TDZE 803

MIRL Rwy 1-19

REIL Rwy 1 and 19

3000 	WAGSE 	VGS1 and RNAV glidepath not coincident (VGS1 Angle 3.00/TCH 38).			
*RNAV only.	*0.9 NM to RW19	LISTE 2500	DOTTY	5 NM Holding Pattern	009° → 6000 ← 189° 3000
	0.9	4.2 NM	6 NM	GP 3.00° TCH 45	
CATEGORY	A	B	C	D	
LPV DA	1095-1 292 (300-1)				
RNAV/ VNAV DA	1142-1¼ 339 (400-1¼)				
RNAV MDA	1140-1 337 (400-1)				
CIRCLING	1200-1 397 (400-1)	1260-1 457 (500-1)	1320-1½ 517 (600-1½)	1480-2¼ 677 (700-2¼)	