

WAAS CH 45820 W09A	APP CRS 093°	Rwy Idg TDZE Apt Elev	5001 736 738
--	------------------------	-----------------------------	---

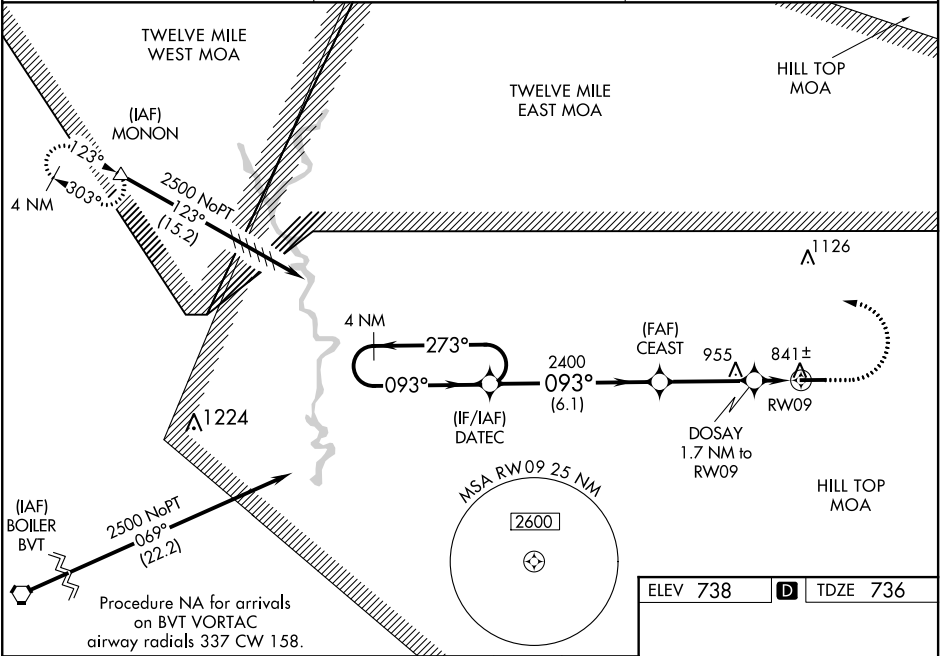
RNAV (GPS) RWY 9
LOGANSFORT/CASS COUNTY (GGP)

NA

Baro-VNAV NA when using Grissom ARB altimeter setting. For uncompensated Baro-VNAV systems, LNAV/VNAV NA below -16°C (4°F) or above 39°C (102°F). Obtain local altimeter setting on CTAF; when not received, use Grissom ARB altimeter setting and increase all DA 36 feet, all MDA 40 feet, LNAV/VNAV all Cts and LNAV Cat C and D visibility 1/8 mile. When VGS1 inoperative, Straight-in/Circling Rwy 9 procedure NA at night. DME/DME RNP-0.3 NA. Helicopter visibility reduction below 1 SM NA.

MISSED APPROACH:
Climb to 1200, then climbing left turn to 2500 direct MONON and hold.

AWOS-3P 118.5	GRISSOM APP CON★ 121.05 338.275	UNICOM 122.8 (CTAF) 0
-------------------------	---	---------------------------------



4 NM Holding Pattern		VGS1 and RNAV glidepath not coincident (VGS1 Angle 3.00/TCH 24).		1200	2500	MONON
DATEC		CEAST		↑	↖	△
2500 ← 273°		093° →		*LNAV only		
GP 3.00° TCH 40		2400		DOSAY 1.7 NM to RW09		
2500		2400		RW09		
6.1 NM		3.4 NM		1.7 NM		
CATEGORY	A	B	C	D		
LPV DA	991-1 255 (300-1)					
LNAV/VNAV DA	1022-1 286 (300-1)					
LNAV MDA	1100-1 364 (400-1)					
CIRCLING	1160-1 422 (500-1)	1200-1 462 (500-1)	1200-1½ 462 (500-1½)	1300-2 562 (600-2)		

ELEV 738 **D** TDZE 736

MIRL Rwy 9-27 **0**
REIL Rwy 9 and 27 **0**

5001 X 75

093° to RW09

27

EC-2, 31 DEC 2020 to 28 JAN 2021

EC-2, 31 DEC 2020 to 28 JAN 2021