

WAAS CH 70703 W27A	APP CRS 273°	Rwy Idg 5001 TDZE 738 Apt Elev 738
--	------------------------	---

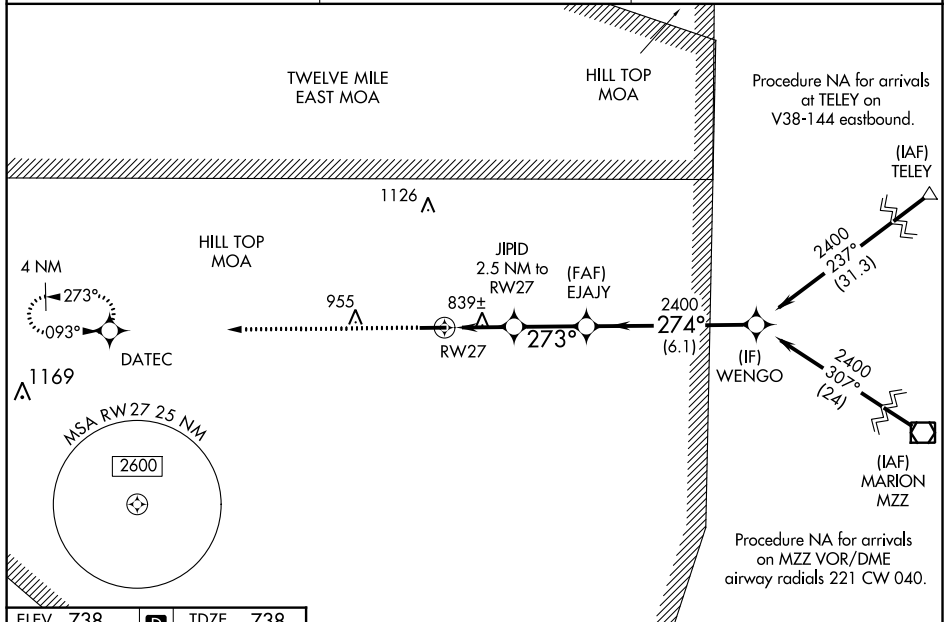
RNAV (GPS) RWY 27

V Baro-VNAV NA when using Grissom ARB altimeter setting. For uncompensated Baro-VNAV systems, LNAV/VNAV NA below -16°C (4°F) or above 39°C (102°F). DME/DME RNP-0.3 NA.

A NA VDP NA with Grissom ARB altimeter setting. Obtain local altimeter setting on CTAF; when not received, use Grissom ARB altimeter setting and increase all DA 36 feet, all MDA 40 feet and LNAV/VNAV all Cats visibility $\frac{1}{4}$ mile and LNAV Cat C/D visibility $\frac{1}{8}$ mile.

MISSED APPROACH:
Climb to 2500 direct
DATEC and hold.

AWOS-3P 118.5	GRISCOM APP CON★ 121.05 338.275	UNICOM 122.8 (CTAF) 0
-------------------------	---	---------------------------------



ELEV 738	D	TDZE 738
----------	----------	----------

