

WAAS CH 56528 W23A	APP CRS 230°	Rwy Idg 3741 TDZE 1041 Apt Elev 1041	RNAV (GPS) RWY 23 MIAMI UNIVERSITY (OXD)
--	------------------------	---	--

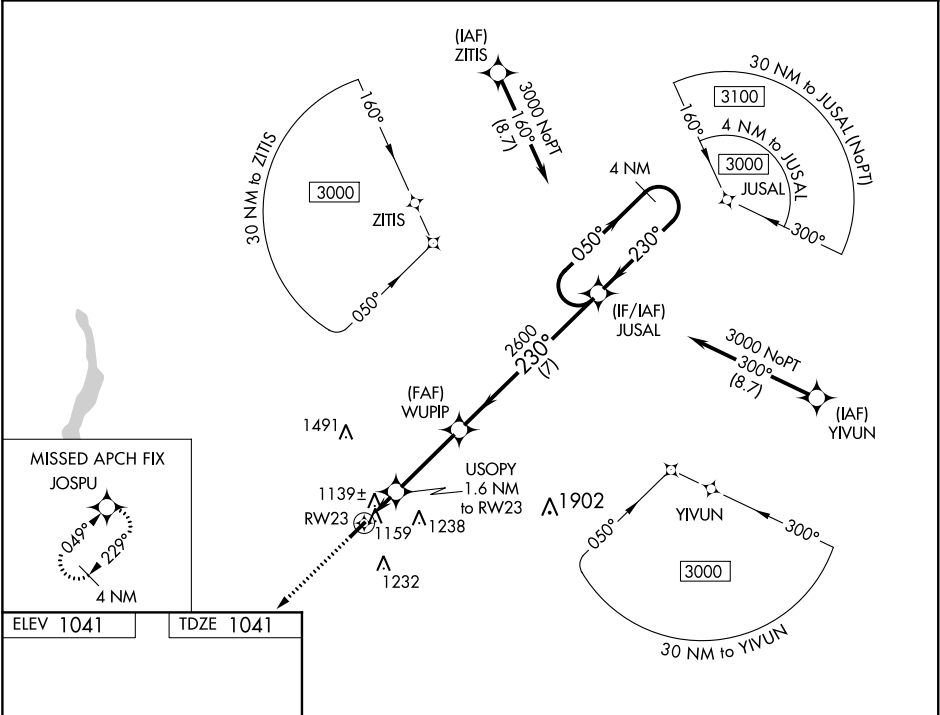
▼

NA

When VGSI inop, Circling Rwy 5 NA at night. When VGSI inop, Straight-in/Circling Rwy 23 procedure NA at night. DME/DME RNP-0.3 NA. Visibility reduction by helicopters NA. When local altimeter setting not received, use Covington altimeter setting and increase all MDA 100 feet, increase LP Cat C visibility ¾ mile, increase LNAV and Circling Cat C visibility ½ mile.

MISSED APPROACH: Climb to 3000 direct JOSPU and hold.

AWOS-3PT 118.625	CINCINNATI APP CON 121.0 254.25	UNICOM 122.8 (CTAF)	122.9
----------------------------	---	-------------------------------	--------------



ELEV 1041	TDZE 1041	VGSI and descent angles not coincident (VGSI Angle 3.00/TCH 28).			
MIRL Rwy 5-23		MIRL Rwy 5 and 23			
REIL Rwy 5 and 23		REIL Rwy 5 and 23			
MIRL Rwy 5-23		MIRL Rwy 5 and 23			
REIL Rwy 5 and 23		REIL Rwy 5 and 23			
MIRL Rwy 5-23		MIRL Rwy 5 and 23			
REIL Rwy 5 and 23		REIL Rwy 5 and 23			
MIRL Rwy 5-23		MIRL Rwy 5 and 23			
REIL Rwy 5 and 23		REIL Rwy 5 and 23			
MIRL Rwy 5-23		MIRL Rwy 5 and 23			
REIL Rwy 5 and 23		REIL Rwy 5 and 23			
MIRL Rwy 5-23		MIRL Rwy 5 and 23			
REIL Rwy 5 and 23		REIL Rwy 5 and 23			
MIRL Rwy 5-23		MIRL Rwy 5 and 23			
REIL Rwy 5 and 23		REIL Rwy 5 and 23			
MIRL Rwy 5-23		MIRL Rwy 5 and 23			
REIL Rwy 5 and 23		REIL Rwy 5 and 23			
MIRL Rwy 5-23		MIRL Rwy 5 and 23			
REIL Rwy 5 and 23		REIL Rwy 5 and 23			
MIRL Rwy 5-23		MIRL Rwy 5 and 23			
REIL Rwy 5 and 23		REIL Rwy 5 and 23			
MIRL Rwy 5-23		MIRL Rwy 5 and 23			
REIL Rwy 5 and 23		REIL Rwy 5 and 23			
MIRL Rwy 5-23		MIRL Rwy 5 and 23			
REIL Rwy 5 and 23		REIL Rwy 5 and 23			
MIRL Rwy 5-23		MIRL Rwy 5 and 23			
REIL Rwy 5 and 23		REIL Rwy 5 and 23			
MIRL Rwy 5-23		MIRL Rwy 5 and 23			
REIL Rwy 5 and 23		REIL Rwy 5 and 23			
MIRL Rwy 5-23		MIRL Rwy 5 and 23			
REIL Rwy 5 and 23		REIL Rwy 5 and 23			
MIRL Rwy 5-23		MIRL Rwy 5 and 23			
REIL Rwy 5 and 23		REIL Rwy 5 and 23			
MIRL Rwy 5-23		MIRL Rwy 5 and 23			
REIL Rwy 5 and 23		REIL Rwy 5 and 23			
MIRL Rwy 5-23		MIRL Rwy 5 and 23			
REIL Rwy 5 and 23		REIL Rwy 5 and 23			
MIRL Rwy 5-23		MIRL Rwy 5 and 23			
REIL Rwy 5 and 23		REIL Rwy 5 and 23			
MIRL Rwy 5-23		MIRL Rwy 5 and 23			
REIL Rwy 5 and 23		REIL Rwy 5 and 23			
MIRL Rwy 5-23		MIRL Rwy 5 and 23			
REIL Rwy 5 and 23		REIL Rwy 5 and 23			
MIRL Rwy 5-23		MIRL Rwy 5 and 23			
REIL Rwy 5 and 23		REIL Rwy 5 and 23			
MIRL Rwy 5-23		MIRL Rwy 5 and 23			
REIL Rwy 5 and 23		REIL Rwy 5 and 23			
MIRL Rwy 5-23		MIRL Rwy 5 and 23			
REIL Rwy 5 and 23		REIL Rwy 5 and 23			
MIRL Rwy 5-23		MIRL Rwy 5 and 23			
REIL Rwy 5 and 23		REIL Rwy 5 and 23			
MIRL Rwy 5-23		MIRL Rwy 5 and 23			
REIL Rwy 5 and 23		REIL Rwy 5 and 23			
MIRL Rwy 5-23		MIRL Rwy 5 and 23			
REIL Rwy 5 and 23		REIL Rwy 5 and 23			
MIRL Rwy 5-23		MIRL Rwy 5 and 23			
REIL Rwy 5 and 23		REIL Rwy 5 and 23			
MIRL Rwy 5-23		MIRL Rwy 5 and 23			
REIL Rwy 5 and 23		REIL Rwy 5 and 23			
MIRL Rwy 5-23		MIRL Rwy 5 and 23			
REIL Rwy 5 and 23		REIL Rwy 5 and 23			
MIRL Rwy 5-23		MIRL Rwy 5 and 23			
REIL Rwy 5 and 23		REIL Rwy 5 and 23			
MIRL Rwy 5-23		MIRL Rwy 5 and 23			
REIL Rwy 5 and 23		REIL Rwy 5 and 23			
MIRL Rwy 5-23		MIRL Rwy 5 and 23			
REIL Rwy 5 and 23		REIL Rwy 5 and 23			
MIRL Rwy 5-23		MIRL Rwy 5 and 23			
REIL Rwy 5 and 23		REIL Rwy 5 and 23			
MIRL Rwy 5-23		MIRL Rwy 5 and 23			
REIL Rwy 5 and 23		REIL Rwy 5 and 23			
MIRL Rwy 5-23		MIRL Rwy 5 and 23			
REIL Rwy 5 and 23		REIL Rwy 5 and 23			
MIRL Rwy 5-23		MIRL Rwy 5 and 23			
REIL Rwy 5 and 23		REIL Rwy 5 and 23			
MIRL Rwy 5-23		MIRL Rwy 5 and 23			
REIL Rwy 5 and 23		REIL Rwy 5 and 23			
MIRL Rwy 5-23		MIRL Rwy 5 and 23			
REIL Rwy 5 and 23		REIL Rwy 5 and 23			
MIRL Rwy 5-23		MIRL Rwy 5 and 23			
REIL Rwy 5 and 23		REIL Rwy 5 and 23			
MIRL Rwy 5-23		MIRL Rwy 5 and 23			
REIL Rwy 5 and 23		REIL Rwy 5 and 23			
MIRL Rwy 5-23		MIRL Rwy 5 and 23			
REIL Rwy 5 and 23		REIL Rwy 5 and 23			
MIRL Rwy 5-23		MIRL Rwy 5 and 23			
REIL Rwy 5 and 23		REIL Rwy 5 and 23			
MIRL Rwy 5-23		MIRL Rwy 5 and 23			
REIL Rwy 5 and 23		REIL Rwy 5 and 23			
MIRL Rwy 5-23		MIRL Rwy 5 and 23			
REIL Rwy 5 and 23		REIL Rwy 5 and 23			
MIRL Rwy 5-23		MIRL Rwy 5 and 23			
REIL Rwy 5 and 23		REIL Rwy 5 and 23			
MIRL Rwy 5-23		MIRL Rwy 5 and 23			
REIL Rwy 5 and 23		REIL Rwy 5 and 23			
MIRL Rwy 5-23		MIRL Rwy 5 and 23			
REIL Rwy 5 and 23		REIL Rwy 5 and 23			
MIRL Rwy 5-23		MIRL Rwy 5 and 23			
REIL Rwy 5 and 23		REIL Rwy 5 and 23			
MIRL Rwy 5-23		MIRL Rwy 5 and 23			
REIL Rwy 5 and 23		REIL Rwy 5 and 23			
MIRL Rwy 5-23		MIRL Rwy 5 and 23			
REIL Rwy 5 and 23		REIL Rwy 5 and 23			
MIRL Rwy 5-23		MIRL Rwy 5 and 23			
REIL Rwy 5 and 23		REIL Rwy 5 and 23			
MIRL Rwy 5-23		MIRL Rwy 5 and 23			
REIL Rwy 5 and 23		REIL Rwy 5 and 23			
MIRL Rwy 5-23		MIRL Rwy 5 and 23			
REIL Rwy 5 and 23		REIL Rwy 5 and 23			
MIRL Rwy 5-23		MIRL Rwy 5 and 23			
REIL Rwy 5 and 23		REIL Rwy 5 and 23			
MIRL Rwy 5-23		MIRL Rwy 5 and 23			
REIL Rwy 5 and 23		REIL Rwy 5 and 23			
MIRL Rwy 5-23		MIRL Rwy 5 and 23			
REIL Rwy 5 and 23		REIL Rwy 5 and 23			
MIRL Rwy 5-23		MIRL Rwy 5 and 23			
REIL Rwy 5 and 23		REIL Rwy 5 and 23			
MIRL Rwy 5-23		MIRL Rwy 5 and 23			
REIL Rwy 5 and 23		REIL Rwy 5 and 23			
MIRL Rwy 5-23		MIRL Rwy 5 and 23			
REIL Rwy 5 and 23		REIL Rwy 5 and 23			
MIRL Rwy 5-23		MIRL Rwy 5 and 23			
REIL Rwy 5 and 23		REIL Rwy 5 and 23			
MIRL Rwy 5-23		MIRL Rwy 5 and 23			
REIL Rwy 5 and 23		REIL Rwy 5 and 23			
MIRL Rwy 5-23		MIRL Rwy 5 and 23			
REIL Rwy 5 and 23		REIL Rwy 5 and 23			
MIRL Rwy 5-23		MIRL Rwy 5 and 23			
REIL Rwy 5 and 23		REIL Rwy 5 and 23			
MIRL Rwy 5-23		MIRL Rwy 5 and 23			
REIL Rwy 5 and 23		REIL Rwy 5 and 23			
MIRL Rwy 5-23		MIRL Rwy 5 and 23			
REIL Rwy 5 and 23		REIL Rwy 5 and 23			
MIRL Rwy 5-23		MIRL Rwy 5 and 23			
REIL Rwy 5 and 23		REIL Rwy 5 and 23			
MIRL Rwy 5-23		MIRL Rwy 5 and 23			
REIL Rwy 5 and 23		REIL Rwy 5 and 23			
MIRL Rwy 5-23		MIRL Rwy 5 and 23			
REIL Rwy 5 and 23		REIL Rwy 5 and 23			
MIRL Rwy 5-23		MIRL Rwy 5 and 23			
REIL Rwy 5 and 23		REIL Rwy 5 and 23			
MIRL Rwy 5-23		MIRL Rwy 5 and 23			
REIL Rwy 5 and 23		REIL Rwy 5 and 23			
MIRL Rwy 5-23		MIRL Rwy 5 and 23			
REIL Rwy 5 and 23		REIL Rwy 5 and 23			
MIRL Rwy 5-23		MIRL Rwy 5 and 23			
REIL Rwy 5 and 23		REIL Rwy 5 and 23			
MIRL Rwy 5-23		MIRL Rwy 5 and 23			
REIL Rwy 5 and 23		REIL Rwy 5 and 23			
MIRL Rwy 5-23		MIRL Rwy 5 and 23			
REIL Rwy 5 and 23		REIL Rwy 5 and 23			
MIRL Rwy 5-23		MIRL Rwy 5 and 23			
REIL Rwy 5 and 23		REIL Rwy 5 and 23			
MIRL Rwy 5-23		MIRL Rwy 5 and 23			
REIL Rwy 5 and 23		REIL Rwy 5 and 23			
MIRL Rwy 5-23		MIRL Rwy 5 and 23			
REIL Rwy 5 and 23		REIL Rwy 5 and 23			
MIRL Rwy 5-23		MIRL Rwy 5 and 23			
REIL Rwy 5 and 23		REIL Rwy 5 and 23			
MIRL Rwy 5-23		MIRL Rwy 5 and 23			
REIL Rwy 5 and 23		REIL Rwy 5 and 23			
MIRL Rwy 5-23		MIRL Rwy 5 and 23			
REIL Rwy 5 and 23		REIL Rwy 5 and 23			
MIRL Rwy 5-23		MIRL Rwy 5 and 23			
REIL Rwy 5 and 23		REIL Rwy 5 and 23			
MIRL Rwy 5-23		MIRL Rwy 5 and 23			
REIL Rwy 5 and 23		REIL Rwy 5 and 23			
MIRL Rwy 5-23		MIRL Rwy 5 and 23			
REIL Rwy 5 and 23		REIL Rwy 5 and 23			
MIRL Rwy 5-23		MIRL Rwy 5 and 23			
REIL Rwy 5 and 23		REIL Rwy 5 and 23			
MIRL Rwy 5-23		MIRL Rwy 5 and 23			
REIL Rwy 5 and 23		REIL Rwy 5 and 23			
MIRL Rwy 5-23		MIRL Rwy 5 and 23			
REIL Rwy 5 and 23		REIL Rwy 5 and 23			
MIRL Rwy 5-23		MIRL Rwy 5 and 23			
REIL Rwy 5 and 23		REIL Rwy 5 and 23			
MIRL Rwy 5-23		MIRL Rwy 5 and 23			
REIL Rwy 5 and 23		REIL Rwy 5 and 23			
MIRL Rwy 5-23		MIRL Rwy 5 and 23			
REIL Rwy 5 and 23		REIL Rwy 5 and 23			
MIRL Rwy 5-23		MIRL Rwy 5 and 23			
REIL Rwy 5 and 23		REIL Rwy 5 and 23			
MIRL Rwy 5-23		MIRL Rwy 5 and 23			
REIL Rwy 5 and 23		REIL Rwy 5 and 23			
MIRL Rwy 5-23		MIRL Rwy 5 and 23			
REIL Rwy 5 and 23		REIL Rwy 5 and 23			
MIRL Rwy 5-23		MIRL Rwy 5 and 23			
REIL Rwy 5 and 23		REIL Rwy 5 and 23			
MIRL Rwy 5-23		MIRL Rwy 5 and 23			
REIL Rwy 5 and 23		REIL Rwy 5 and 23			
MIRL Rwy 5-23		MIRL Rwy 5 and 23			
REIL Rwy 5 and 23		REIL Rwy 5 and 23			
MIRL Rwy 5-23		MIRL Rwy 5 and 23			
REIL Rwy 5 and 23		REIL Rwy 5 and 23			
MIRL Rwy 5-23		MIRL Rwy 5 and 23			
REIL Rwy 5 and 23		REIL Rwy 5 and 23			
MIRL Rwy 5-23		MIRL Rwy 5 and 23			
REIL Rwy 5 and 23		REIL Rwy 5 and 23			
MIRL Rwy 5-23		MIRL Rwy 5 and 23			
REIL Rwy 5 and 23		REIL Rwy 5 and 23			
MIRL Rwy 5-23		MIRL Rwy 5 and 23			
REIL Rwy 5 and 23		REIL Rwy 5 and 23			
MIRL Rwy 5-23		MIRL Rwy 5 and 23			
REIL Rwy 5 and 23		REIL Rwy 5 and 23			
MIRL Rwy 5-23		MIRL Rwy 5 and 23			
REIL Rwy 5 and 23		REIL Rwy 5 and 23			
MIRL Rwy 5-23		MIRL Rwy 5 and 23			
REIL Rwy 5 and 23		REIL Rwy 5 and 23			
MIRL Rwy 5-23		MIRL Rwy 5 and 23			
REIL Rwy 5 and 23		REIL Rwy 5 and 23			
MIRL Rwy 5-23		MIRL Rwy 5 and 23			
REIL Rwy 5 and 23		REIL Rwy 5 and 23			
MIRL Rwy 5-23		MIRL Rwy 5 and 23			
REIL Rwy 5 and 23		REIL Rwy 5 and 23			
MIRL Rwy 5-23		MIRL Rwy 5 and 23			