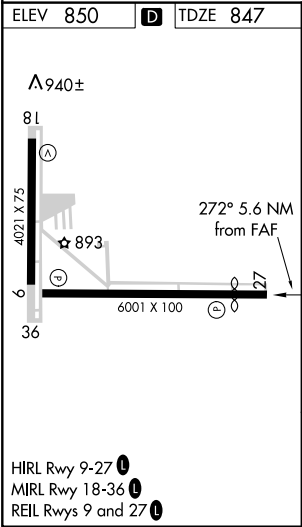
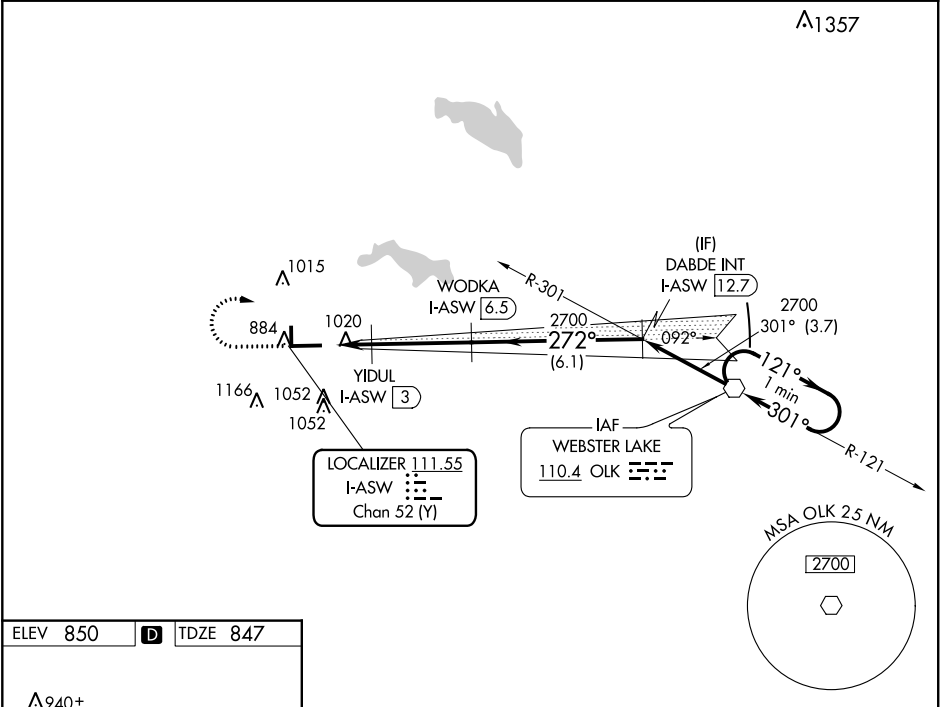


LOC/DME I-ASW	APP CRS	Rwy Idg	5100
111.55	272°	TDZE	847
Chan 52(Y)		Apt Elev	850

ILS or LOC/DME RWY 27
WARSAW MUNI (ASW)

▼ ▲ NA	When local altimeter setting not received, use Goshen altimeter setting and increase all DA/MDA 40 feet. Circling to Rwy 36 NA at night. VDP NA with Goshen altimeter setting. When VGSI inoperative, Circling Rwy 18 NA at night.	MISSED APPROACH: Climb to 1500 then climbing right turn to 2700 direct OLK VOR and hold.
-----------	--	--

AWOS-3 121.125	FORT WAYNE APP CON 127.2 284.6	CINC DEL 134.05	UNICOM 122.7 (CTAF) 0
-------------------	-----------------------------------	--------------------	--------------------------



1500	2700	OLK	WODKA I-ASW [6.5]	DABDE INT I-ASW [12.7]	OLK VOR	One Minute Holding Pattern
*LOC only	I-ASW [1]	*I-ASW [2.2]	YIDUL I-ASW [3]	2700	272°	2700
	1.2	0.8	3.6 NM	6.1 NM	3.7 NM	
CATEGORY	A	B	C	D		
S-ILS 27		1047-3/4	200 (200-3/4)			
S-LOC 27	1280-1	433 (500-1)	1280-1 1/4 433 (500-1 1/4)	1280-1 1/2 433 (500-1 1/2)		
CIRCLING	1320-1	470 (500-1)	1320-1 1/2 470 (500-1 1/2)	1400-2 550 (600-2)		

EC-2, 31 DEC 2020 to 28 JAN 2021

EC-2, 31 DEC 2020 to 28 JAN 2021