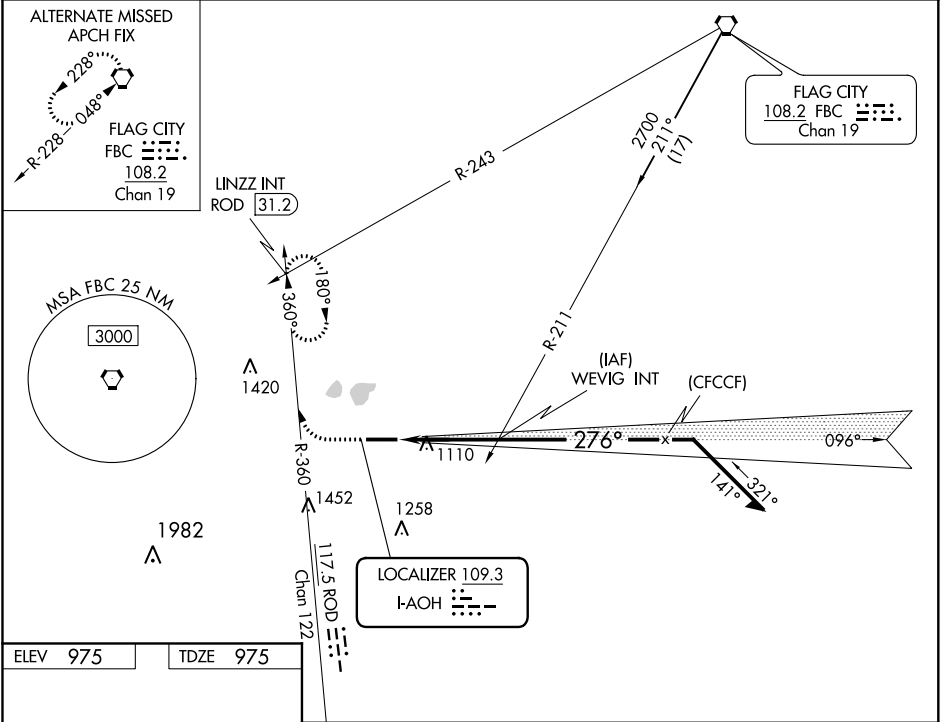


LOC I-AOH 109.3	APP CRS 276°	Rwy Idg TDZE Apt Elev	6000 975 975
---------------------------	------------------------	-----------------------------	---

ILS or LOC RWY 28
LIMA ALLEN COUNTY (AOH)

<p>▼ NA</p> <p>When local altimeter setting not received, use Findlay altimeter setting and increase all DA/MDA 80 feet. Increase ILS all Cats visibility $\frac{1}{8}$ mile, S-LOC Cat C/D and Circling Cat C visibility $\frac{1}{4}$ mile.</p>	MISSED APPROACH: Climb to 3000 on heading 276° and right turn on ROD VORTAC R-360 to LINZZ INT/ROD 31.2 DME and hold.
---	---

ASOS 128.725	COLUMBUS APP CON 118.425 323.15	UNICOM 122.7 (CTAF) 0
------------------------	---	---------------------------------



ELEV 975	TDZE 975
<p>REIL Rwy 10 and 28 0</p> <p>HIRL Rwy 10-28 0</p> <p>FAF to MAP 3.7 NM</p> <p>Knots 60 90 120 150 180</p> <p>Min:Sec 3:42 2:28 1:51 1:29 1:14</p>	

3000

↑

hdg 276°

ROD

R-360

LINZZ

INT

VGSI and ILS glidepath not coincident

(VGSI Angle 3.00/TCH 46).

WEVIG

INT

2200

096°

276°

2200

2700

GS 3.00°

TCH 49°

Remain

within 10 NM

3.7 NM

CATEGORY	A	B	C	D
S-ILS 28	1175- ³ / ₄ 200 (200- ³ / ₄)			
S-LOC 28	1500-1	525 (600-1)	1500-1½	525 (600-1½)
CIRCLING	1500-1	525 (600-1)	1500-1½ 525 (600-1½)	1540-2 565 (600-2)

EC-2, 31 DEC 2020 to 28 JAN 2021

EC-2, 31 DEC 2020 to 28 JAN 2021