

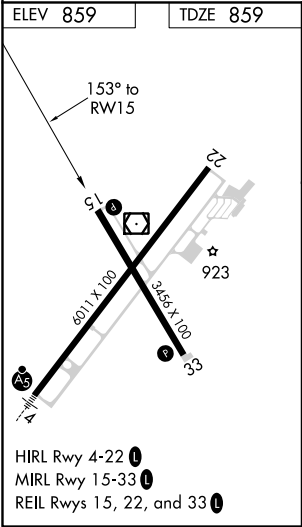
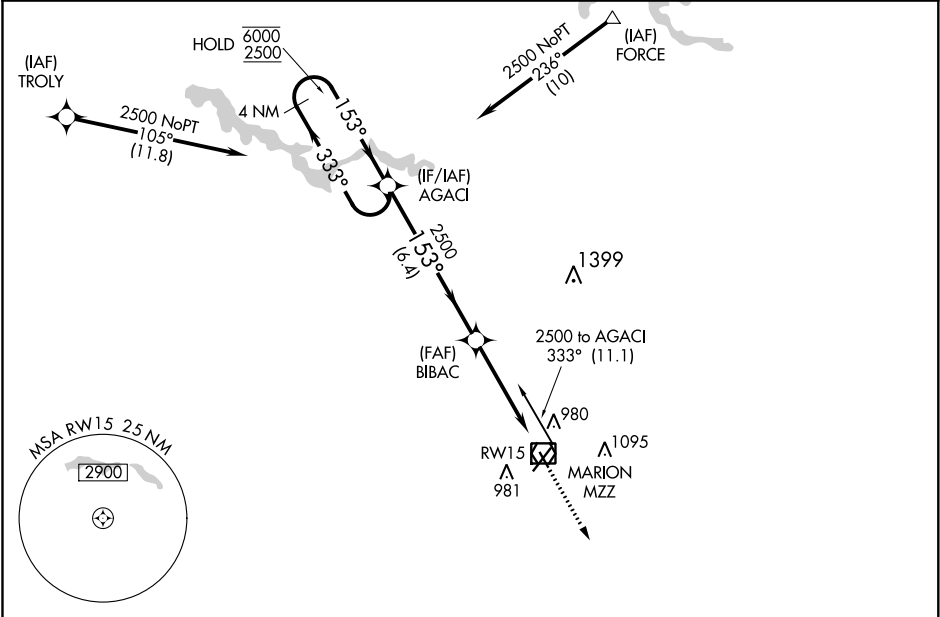
APP CRS	Rwy Idg	3456
153°	TDZE	859
	Apt Elev	859

RNAV (GPS) RWY 15

MARION MUNI - MCKINNEY AIRFIELD (MZZ)

RNP APCH.	MISSED APPROACH: Climb to 2500 direct AKUYA and hold.
T Rwy 15 helicopter visibility reduction below ¾ SM NA.	

AWOS-3 108.6	GRISSOM APP CON ★ 121.05 338.275	CLNC DEL 120.0	UNICOM 122.7 (CTAF) 0
-----------------	-------------------------------------	-------------------	--------------------------



4 NM Holding Pattern				2500	AKUYA
AGACI				BIBAC	
6000 ← 333° 153° → 2500				1.2 NM to RWY 15	RWY 15
				3.25° TCH 40	
				6.4 NM	3.4 NM
CATEGORY	A	B	C	D	
LNAV MDA	1300-1	441 (500-1)	1300-1 3/8	441 (500-1 3/8)	
CIRCLING	1300-1 441 (500-1)	1320-1 461 (500-1)	1400-1 1/2 541 (600-1 1/2)	1500-2 641 (700-2)	

EC-2, 31 DEC 2020 to 28 JAN 2021

EC-2, 31 DEC 2020 to 28 JAN 2021