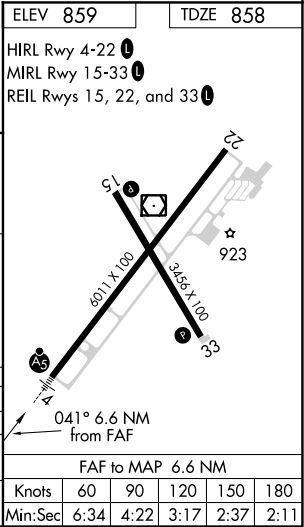
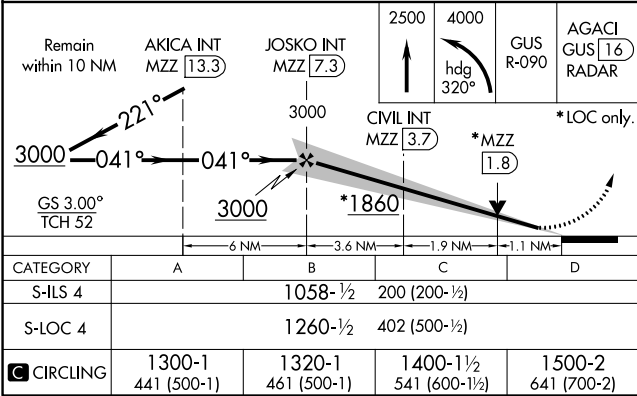
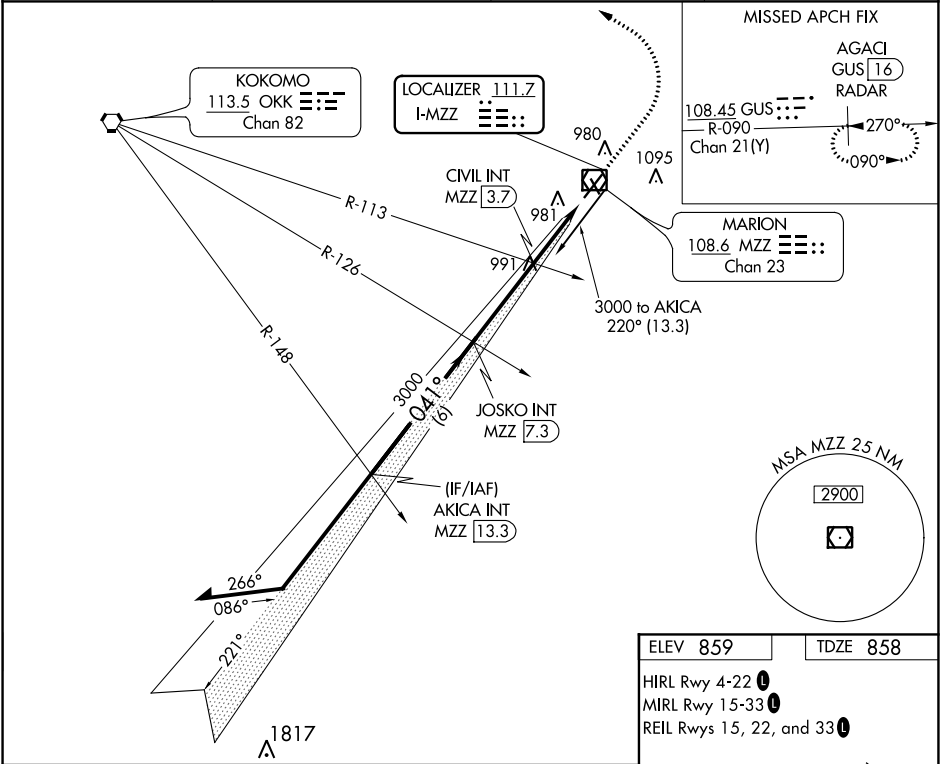


LOC I-MZZ <b>111.7</b>	APP CRS <b>041°</b>	Rwy Idg TDZE Apt Elev	<b>6011</b> <b>858</b> <b>859</b>
---------------------------	------------------------	-----------------------------	---

ILS or LOC RWY 4

MARION MUNI - MCKINNEY AIRFIELD (MZZ)

DME required. ▼ DME from MZZ VOR/DME. ▲ NA Simultaneous reception of I-MZZ and MZZ DME required.		MALSR AS	MISSED APPROACH: Climb to 2500 then climbing left turn to 4000 on heading 320° to intercept GUS VORTAC R-090 to AGACI/ GUS VORTAC 16 DME/RADAR and hold.
AWOS-3 <b>108.6</b>	GRISOM APP CON ★ <b>121.05 338.275</b>	CLNC DEL <b>120.0</b>	UNICOM <b>122.7 (CTAF) 0</b>



EC-2, 31 DEC 2020 to 28 JAN 2021

EC-2, 31 DEC 2020 to 28 JAN 2021