
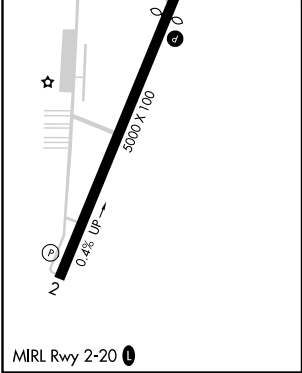
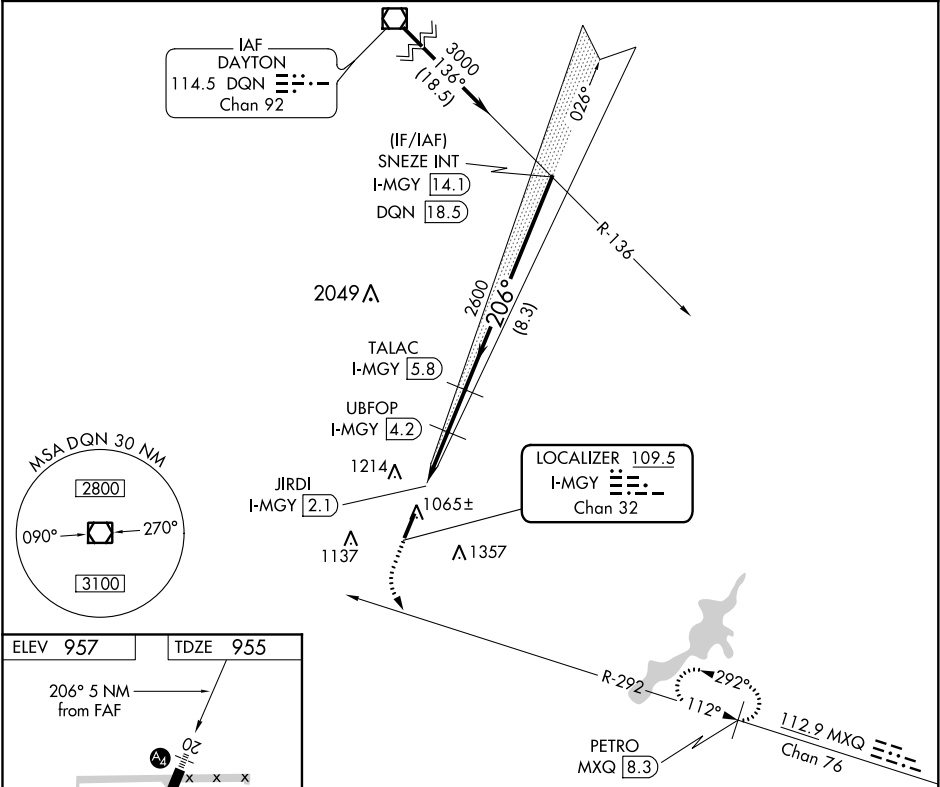


LOC/DME I-MGY	APP CRS	Rwy Idg	4410
109.5	206°	TDZE	955
Chan 32		Apt Elev	957

LOC RWY 20
DAYTON-WRIGHT BROTHERS (MGY)

DME required.		<div>MALS</div> <div></div>	MISSED APPROACH: Climb to 1600 then climbing left turn to 3000 on heading 118° and MXQ VOR/DME R-292 to PETRO MXQ 8.3 DME and hold.
<div><div><div><div><div></div><div></div></div><div><div></div><div></div></div></div><div><div></div><div></div></div></div></div>	Rwy 20 helicopter visibility reduction below ¾ SM NA. Inop table does not apply.		
ASOS 118.375	COLUMBUS APP CON 118.85 269.275	CLNC DEL 119.4	UNICOM 122.8 (CTAF) 0



1600	3000	MXQ R-292	PETRO MXQ 8.3	TALAC I-MGY 5.8	SNEZE INT I-MGY 14.1
↑	hdg 118°				
		UBPOP I-MGY 4.2	JIRDI I-MGY 2.1	TCH 40	3000
				2600	
				2040	
				1.2	2.1 NM
				1.6 NM	8.3 NM
CATEGORY	A	B	C	D	
S-LOC 20		1320-1 1/2	365 (400-1 1/2)		
CIRCLING	1440-1 1/2 483 (500-1 1/2)	1520-1 1/2 563 (600-1 1/2)	1660-2 703 (800-2)	1660-2 1/4 703 (800-2 1/4)	

EC-2, 31 DEC 2020 to 28 JAN 2021

EC-2, 31 DEC 2020 to 28 JAN 2021