

LOC I-JNKK
109.1

APP CRS
319°

Rwy Idg **6500**
TDZE **937**
Apt Elev **937**

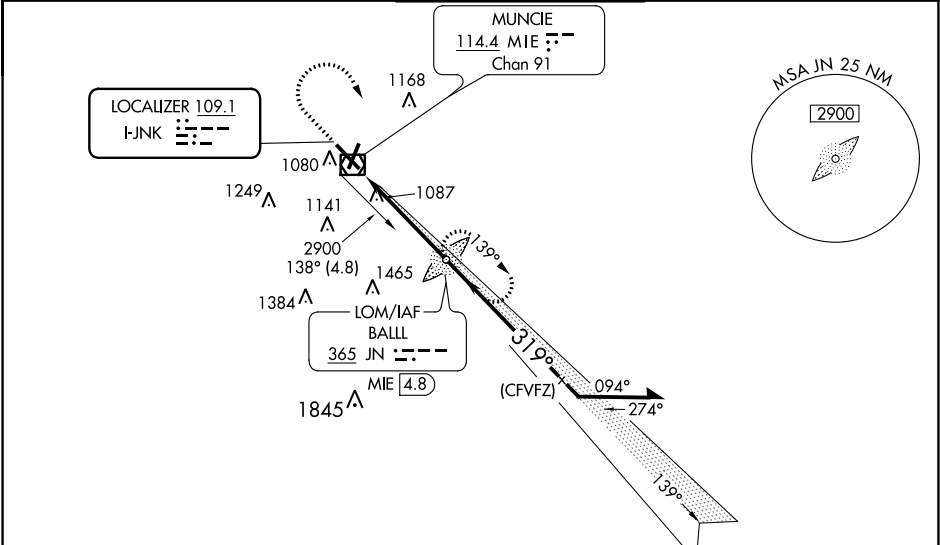
ILS or LOC RWY 32
DELAWARE COUNTY RGNL (MIE)

When control tower closed, except for operations with approved weather reporting use Fort Wayne altimeter setting. For inop MALSRS when using Fort Wayne altimeter setting minimums, increase S-ILS 32 visibility to 1 SM. When local altimeter setting not received, use Fort Wayne altimeter setting: increase DA to 1257 feet and visibility all Cats ¼ SM; increase all MDAs 120 feet and visibility Cat C ½ SM, Cat D 1 ½ SM. VDP NA when using Fort Wayne altimeter setting.

MALSRS

MISSED APPROACH: Climb to 1460 then climbing right turn to 2900 direct BALL LOM and hold.

ATIS 133.25	INDIANAPOLIS APP CON 120.65 317.8	MUNCIE TOWER ★ 120.1 (CTAF)	GND CON 121.9	UNICOM 122.95
-----------------------	---	---------------------------------------	-------------------------	-------------------------



ADF or DME REQUIRED

ELEV 937

D

TDZE 937

1460

2900

JN

*LOC only.

*MIE 1.4

JN LOM MIE 4.8

Remain within 10 NM

2462

319°

2900

2500

GS 3.00°

TCH 52

CATEGORY	A	B	C	D
S-ILS 32	1137-½	200 (200-½)		
S-LOC 32	1380-½	443 (500-½)	1380-¾	443 (500-¾)
CIRCLING	1460-1	523 (600-1)	1500-1½ 563 (600-1½)	1600-2 663 (700-2)

FORT WAYNE ALTIMETER SETTING MINIMUMS

S-ILS 32	1257-⅝	320 (400-⅝)		
S-LOC 32	1520-½	583 (600-½)	1520-1½ 583 (600-1½)	1520-2½ 583 (600-2½)
CIRCLING	1580-1	643 (700-1)	1600-1¾ 663 (700-1¾)	1720-2½ 783 (800-2½)

HIRL Rwy 14-32

MIRL Rwy 3-21

REIL Rwy 3, 14 and 21

FAF to MAP 4.6 NM

Knots

60

90

120

150

180

Min:Sec

4:36

3:04

2:18

1:50

1:32