

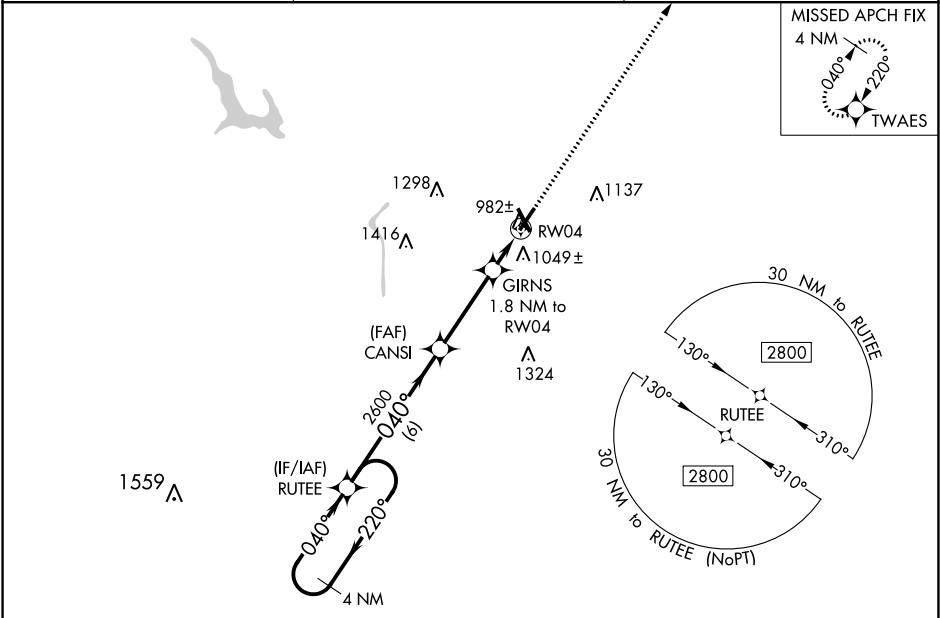
| | | |
|--|------------------------|---|
| WAAS CH 72639 W04A | APP CRS 040° | Rwy Idg TDZE 900 Apt Elev 900 |
|--|------------------------|---|

RNAV (GPS) RWY 4
ZANESVILLE MUNI (ZZV)

⚠ For uncompensated Baro-VNAV systems, LNAV/VNAV NA below -21°C (-5°F) or above 54°C (130°F). Baro-VNAV and VDP NA when using Newark altimeter setting. DME/DME RNP-0.3 NA. When local altimeter setting not received, use Newark altimeter setting and increase all LPV and LNAV/VNAV DA to 1214 and all visibilities to 1 SM, increase all MDA 80 feet; increase LNAV Cat C/D visibility ½ SM and Circling Cat C/D visibility ¼ SM.

MISSED APPROACH:
Climb to 2900 direct TWAES and hold.

| | | |
|-----------------------|--|----------------------------------|
| ASOS 114.95 | INDIANAPOLIS CENTER 124.45 370.9 | UNICOM 123.0 (CTAF) 0* |
|-----------------------|--|----------------------------------|



4 NM Holding Pattern

VGSI and RNAV glidepath not coincident (VGSI Angle 3.00/TCH 35).

2900 TWAES

*RNAV only

GP 3.00° TCH 45

6 NM 3.4 NM 0.8 NM 1 NM

| CATEGORY | A | B | C | D |
|--------------|-----------------------|-----------------------|-----------------------|-------------------------|
| LPV DA | 1150-78 250 (300-78) | | | |
| LNAV/VNAV DA | 1150-78 250 (300-78) | | | |
| LNAV MDA | 1240-1 340 (400-1) | | | |
| CIRCLING | 1380-1 480 (500-1) | 1400-1 500 (500-1) | 1620-2 720 (800-2) | 1620-2¼ 720 (800-2¼) |

HIRL Rwy 4-22 0*

MIRL Rwy 16-34

REIL Rwy 4, 16, 22 and 34 0*

EC-2, 31 DEC 2020 to 28 JAN 2021

EC-2, 31 DEC 2020 to 28 JAN 2021