

ZANESVILLE, OHIO

AL-864 (FAA)

20310

LOC/DME I-TNF	APP CRS	Rwy Idg	4999
<b>109.95</b>	<b>220°</b>	TDZE	<b>892</b>
Chan <b>36</b> (Y)		Apt Elev	<b>900</b>

# ILS or LOC RWY 22

ZANESVILLE MUNI (ZZV)

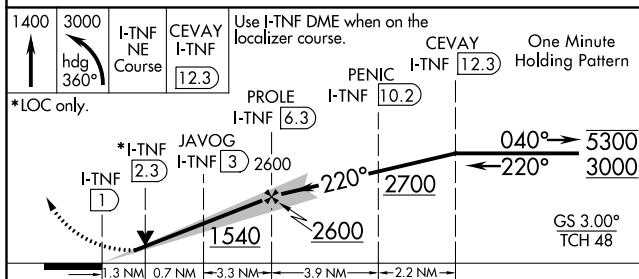
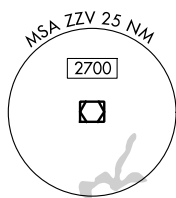
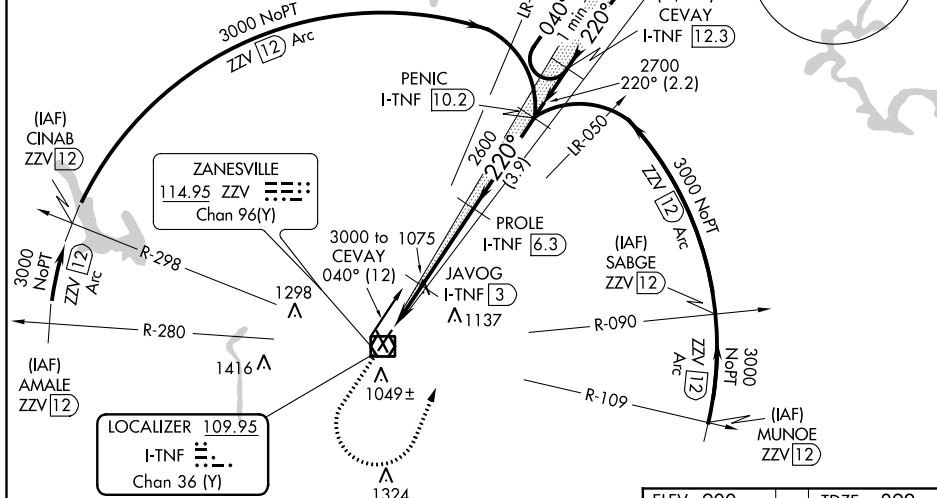
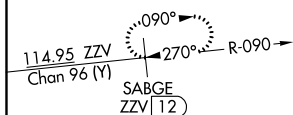
DME required.



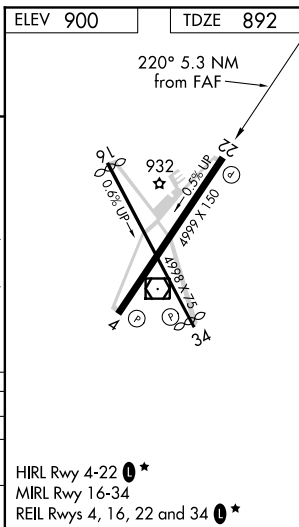
MISSED APPROACH: Climb to 1400 then climbing left turn to 3000 on heading 360° and I-TNF localizer northeast course 040° to CEVAY/I-TNF 12.3 DME and hold.

ASOS <b>114.95</b>	INDIANAPOLIS CENTER <b>124.45 370.9</b>	UNICOM <b>123.0</b> (CTAF) <b>0*</b>
-----------------------	--------------------------------------------	-----------------------------------------

## ALTERNATE MISSED APCH FIX



CATEGORY	A	B	C	D
S-ILS 22	1092- $\frac{3}{4}$	200 (200- $\frac{3}{4}$ )		
S-LOC 22	1340-1	448 (500-1)	1340- $\frac{1}{8}$	448 (500- $\frac{1}{8}$ )
CIRCLING	1380-1 480 (500-1)	1420-1 520 (600-1)	1560- $\frac{1}{4}$ 660 (700- $\frac{1}{4}$ )	1620- $\frac{1}{4}$ 720 (800- $\frac{1}{4}$ )



ZANESVILLE, OHIO

Amdt 2 05DEC19

39°57'N-81°54'W

# ZANESVILLE MUNI (ZZV)

## ILS or LOC RWY 22

HIRL Rwy 4-22 **0\***

MIRL Rwy 16-34

REIL Rwy 4, 16, 22 and 34 **0\***

EC-2, 31 DEC 2020 to 28 JAN 2021

EC-2, 31 DEC 2020 to 28 JAN 2021