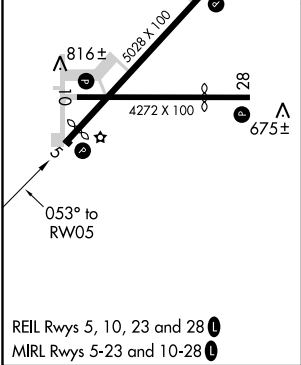
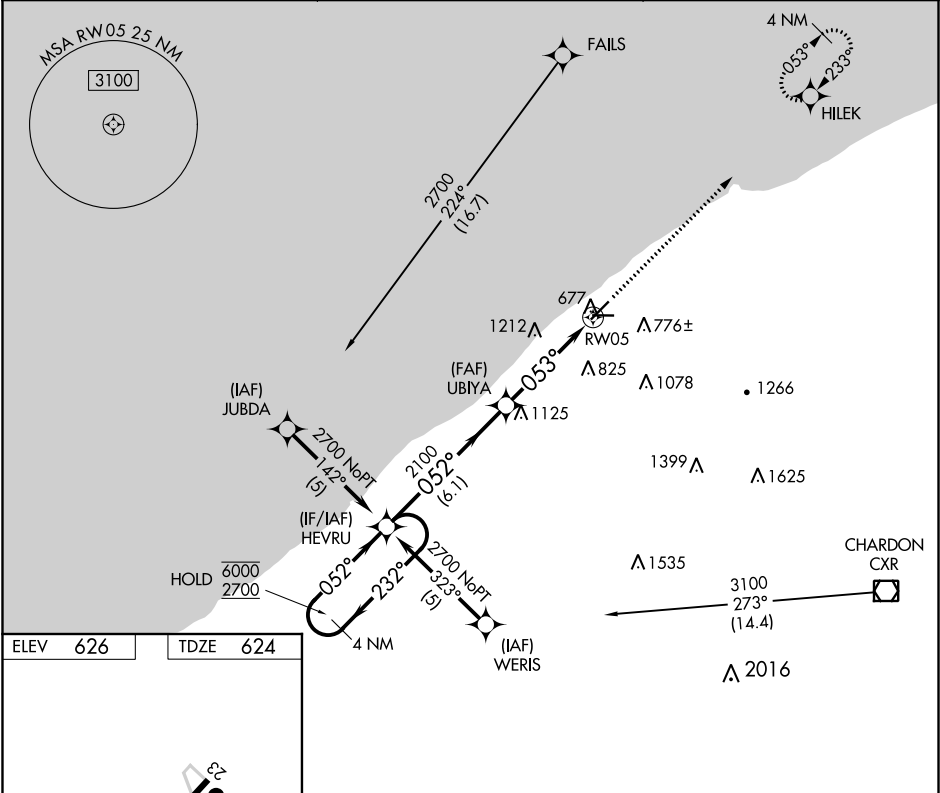


APP CRS	Rwy Idg	4600
053°	TDZE	624
	Apt Elev	626

RNAV (GPS) RWY 5
LAKE COUNTY EXECUTIVE (LNN)

RNP APCH.	MISSED APPROACH: Climb to 2300 direct HILEK and hold.
Rwy 5 helicopter visibility reduction below 3/4 SM NA.	

AWOS-3PT 119.225	CLEVELAND APP CON 125.35 346.325	UNICOM 122.725 (CTAF) 0
----------------------------	--	-----------------------------------



4 NM Holding Pattern				VGSI and descent angles not coincident (VGSI Angle 3.50/TCH 29).	2300	HILEK
6000 2700				HEVRU		
232°				052°	052°	053°
2100				UBIYA	3.04° TCH 40	2.2 NM to RW05
6.1 NM				2.3 NM	2.2 NM	RW05
CATEGORY	A	B	C	D		
LNAV MDA	1460-1 836 (900-1)	1460-1¼ 836 (900-1¼)	1460-2½ 836 (900-2½)	NA		
CIRCLING	1460-1¼	834 (900-1¼)	1460-2½ 834 (900-2½)	NA		

EC-2, 31 DEC 2020 to 28 JAN 2021

EC-2, 31 DEC 2020 to 28 JAN 2021