

APP CRS
098°

Rwy Idg
TDZE
Apt Elev

4272
625
626

RNAV (GPS) RWY 10
LAKE COUNTY EXECUTIVE (LNN)

RNP APCH.

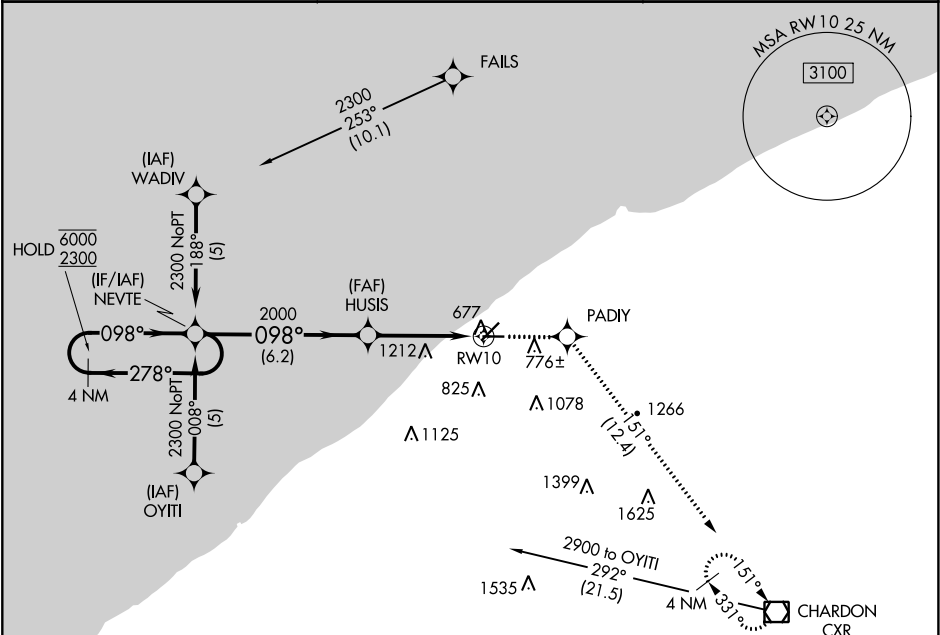
▼

▲

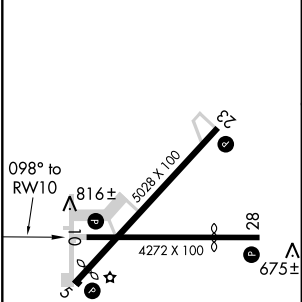
Rwy 10 helicopter visibility reduction below ¾ SM NA.

MISSED APPROACH: Climb to 2900 direct PADIY and on track 151° to CXR VOR/DME and hold.

AWOS-3PT 119.225	CLEVELAND APP CON 125.35 346.325	UNICOM 122.725 (CTAF) 0
----------------------------	--	-----------------------------------



ELEV 626	TDZE 625
----------	----------



REIL Rws 5, 10, 23 and 28 0
MIRL Rws 5-23 and 10-28 0

VGSI and descent angles not coincident (VGSI Angle 3.50/TCH 47).

4 NM Holding Pattern

NEVTE

2900 PADIY

tr 151°

CXR

HUSIS

2.4 NM to RW10

3.03° TCH 40

2000

6.2 NM

1.8 NM

2.4 NM

RW10

CATEGORY	A	B	C	D
LNAV MDA	1560-1¼ 935 (1000-1¼)		1560-2¾ 935 (1000-2¾)	NA
CIRCLING	1560-1¼ 934 (1000-1¼)		1560-2¾ 934 (1000-2¾)	NA