

NDB LQL

263

APP CRS

099°

Rwy Idg

4272

TDZE

625

Apt Elev

626

NDB RWY 10

LAKE COUNTY EXECUTIVE (LNN)

RADAR required for procedure entry.

NA

Rwy 10 helicopter visibility reduction below ¾ SM NA.

MISSED APPROACH: Climb to 3000 then right turn direct LQL NDB and hold.

AWOS-3PT

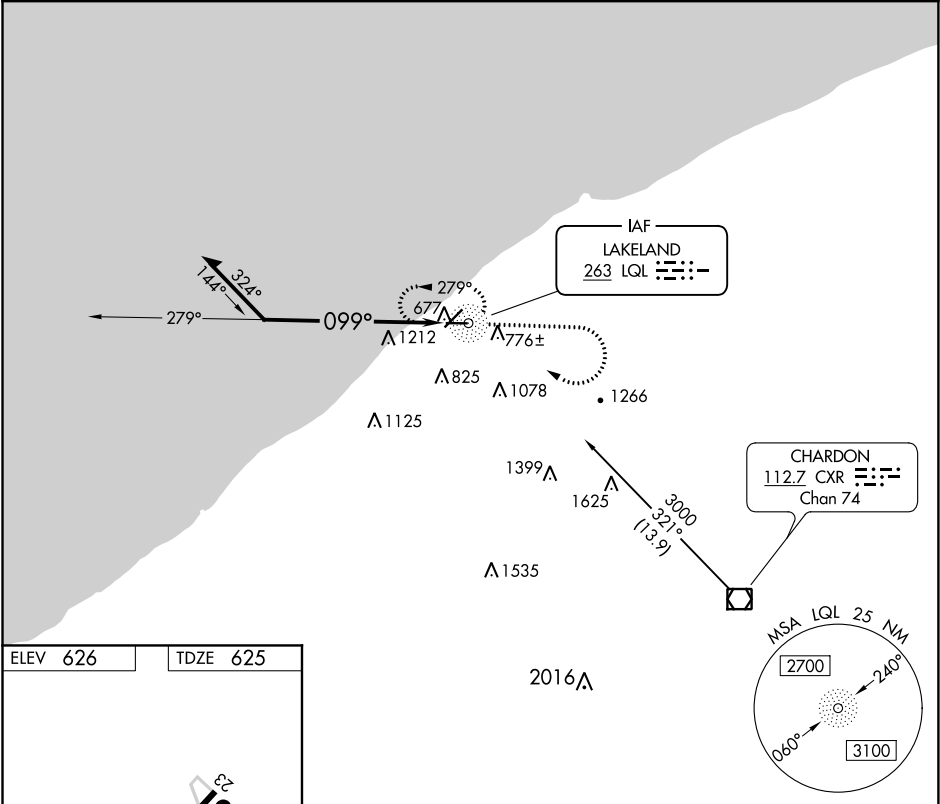
119.225

CLEVELAND APP CON

125.35 346.325

UNICOM

122.725 (CTAF) 0



ELEV 626

TDZE 625

REIL Rwys 5, 10, 23 and 28 0

MIRL Rwys 5-23 and 10-28 0

Remain within 10 NM

3000

279°

099°

LQL NDB

3000

LQL

CATEGORY	A	B	C	D
S-10	1700-1¼ 1075 (1100-1¼)	1700-1½ 1075 (1100-1½)	1700-3 1075 (1100-3)	NA
CIRCLING	1700-1¼ 1074 (1100-1¼)	1700-1½ 1074 (1100-1½)	1700-3 1074 (1100-3)	NA