

GARY, INDIANA

AL-748 (FAA)

19115

APP CRS 306°	Rwy Idg 7959 TDZE 591 Apt Elev 597
------------------------	---

RNAV (RNP) Z RWY 30

GARY/CHICAGO INTL (GYY)

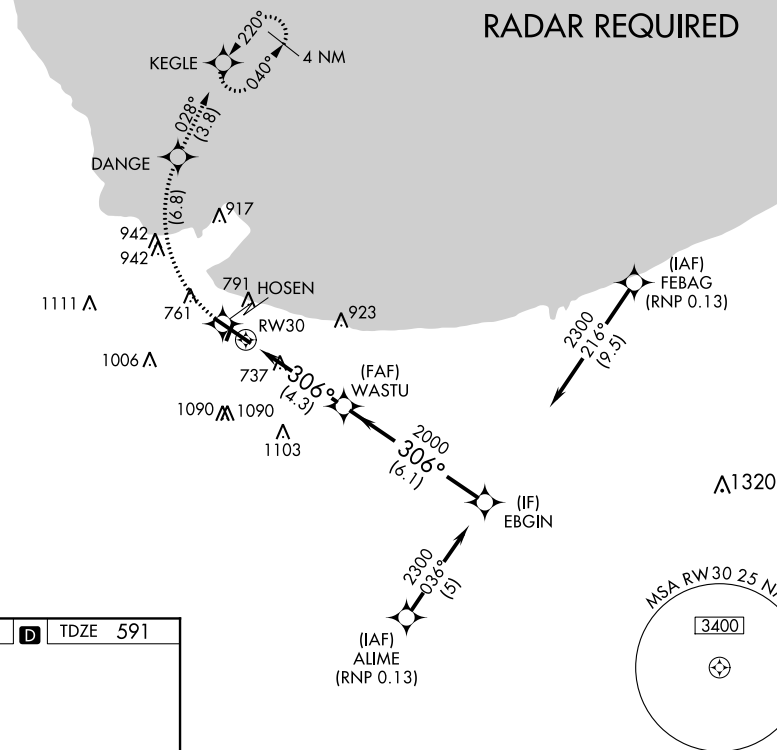
T For uncompensated Baro-VNAV systems, procedure NA below
A -16°C (4°F) or above 54°C (130°F). Missed approach requires
 RNP less than 1.0. RF and GPS required.

MALSR

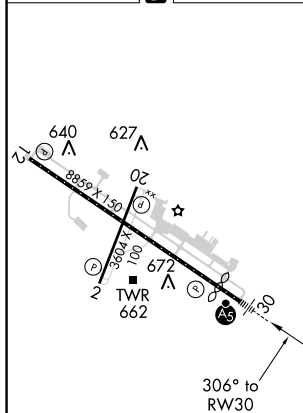


MISSED APPROACH: Climb to 2100 on track 306° to HOSEN, right turn to DANGE, then track 028° to KEGLE and hold.

ATIS 134.575	CHICAGO APP CON 133.1 285.6	GARY TOWER ★ 125.6 (CTAF) 0	GND CON 121.9
------------------------	---------------------------------------	---------------------------------------	-------------------------



ELEV	597	D	TDZE	591
------	-----	----------	------	-----



2100 ↑ tr 306°	HOSEN ✱	↷	DANGE ✱ tr 028°	KEGLE ✱	EBGIN
					2300
					GP 3.00° TCH 57
CATEGORY		B		C	D
RNP 0.13 DA		942-5 ₈		351 (400-%)	

AUTHORIZATION REQUIRED

GARY, INDIANA
Amdt 1 20AUG15

41°37'N-87°25'W

GARY/CHICAGO INTL (GYY)
RNAV (RNP) Z RWY 30

EC-2, 31 DEC 2020 to 28 JAN 2021

EC-2, 31 DEC 2020 to 28 JAN 2021