

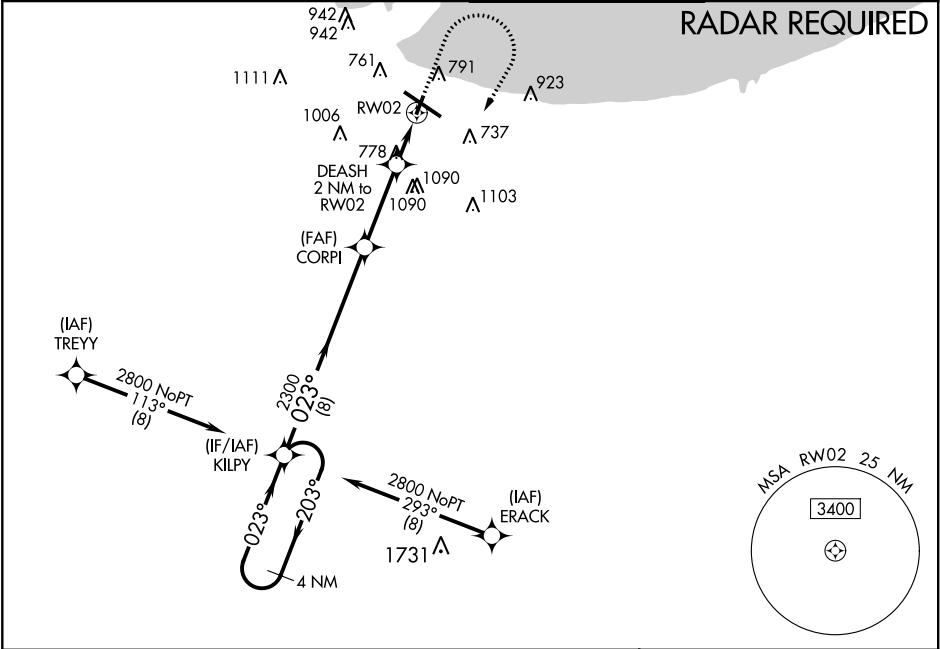
WAAS CH <b>69338</b> <b>W02A</b>	APP CRS <b>023°</b>	Rwy Idg TDZE Apt Elev	<b>3604</b> <b>591</b> <b>597</b>
--	------------------------	-----------------------------	---

**RNAV (GPS) RWY 2**  
GARY/CHICAGO INTL (GYY)

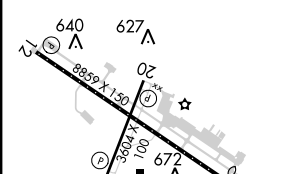
▼ For uncompensated Baro-VNAV systems, LNAV/VNAV NA below -16°C (4°F) or above 54°C (130°F).  
▲ DME/DME RNP-0.3 NA. Helicopter visibility reduction below ¾ SM NA. When local altimeter setting not received, use Chicago Midway Intl altimeter setting and increase LPV DA to 947 feet, LNAV/VNAV DA to 977 feet, all MDA 60 feet; increase LPV and LNAV/VNAV all Cats visibility ⅛ mile, and Circling Cat C and D visibility ¼ mile. Baro-VNAV NA when using Chicago Midway Intl altimeter setting.

**MISSED APPROACH:**  
Climb to 2000 then climbing right turn to 2800 direct KILPY and hold.

ATIS <b>134.575</b>	CHICAGO APP CON <b>133.1 285.6</b>	GARY TOWER ★ <b>125.6 (CTAF) 0</b>	GND CON <b>121.9</b>
------------------------	---------------------------------------	---------------------------------------	-------------------------



4 NM Holding Pattern		KILPY		VGSI and RNAV glidepath not coincident (VGSI Angle 3.00/TCH 40).		2000	2800	KILPY	ELEV 597	TDZE 591	
2800		203°		023°		CORPI 2300		DEASH 2 NM to RW02		RW02	
GP 3.00° TCH 60		2300		*1280		*LNAV only					
8 NM		3.2 NM		2 NM							
CATEGORY	A	B	C	D							
LPV DA	901-1 310 (400-1)										
LNAV/VNAV DA	931-1½ 340 (400-1½)										
LNAV MDA	1040-1 449 (500-1)	1040-1¾ 449 (500-1¾)									
CIRCLING	1140-1 543 (600-1)	1180-1 583 (600-1)	1400-2¼ 803 (900-2¼)	1420-2¾ 823 (900-2¾)							



023° to RW02

1 MRL Rwy 2-20  
 1 HIRL Rwy 12-30  
 1 REIL Rws 2, 12 and 20