

LOC I-GYY <b>108.75</b>	APP CRS <b>306°</b>	Rwy Idg TDZE Apt Elev	<b>7959</b> <b>591</b> <b>597</b>
Chan <b>24</b> (Y)			

# COPTER ILS or LOC RWY 30

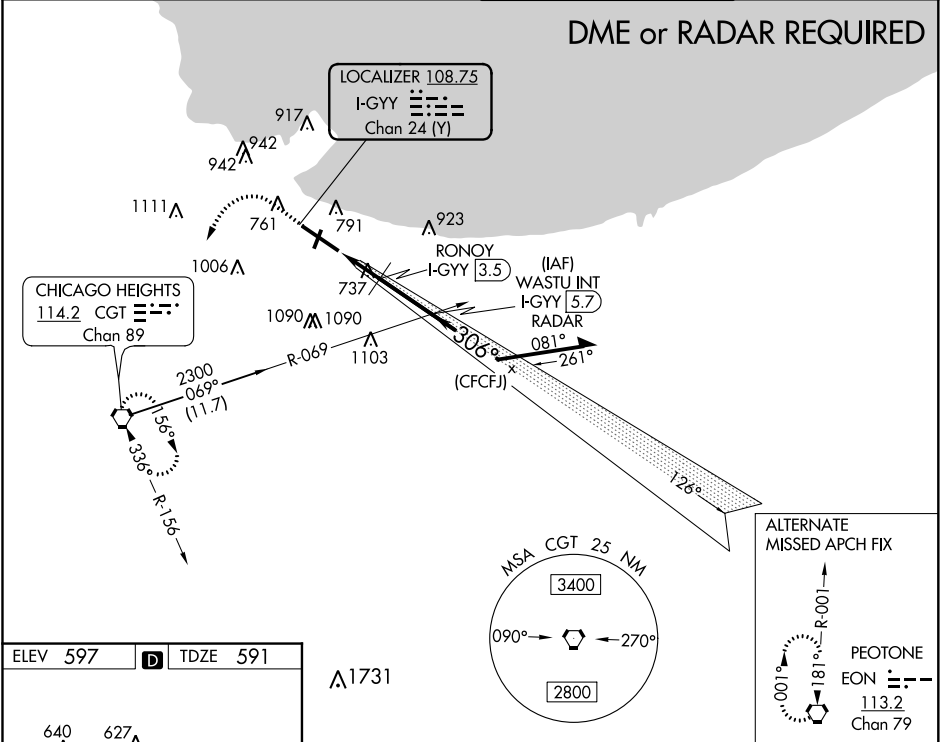
GARY/CHICAGO INTL (GYY)

**⚠** When local altimeter setting not received, use Chicago Midway Intl altimeter setting and increase all DA 46 feet and all MDA 60 feet. VDP NA with Chicago Midway Intl altimeter setting.

**MALSR**

**MISSED APPROACH:** Climb to 1500 then climbing left turn to 2300 direct CGT VORTAC and hold.

ATIS <b>134.575</b>	CHICAGO APP CON <b>133.1 285.6</b>	GARY TOWER ★ <b>125.6</b> (CTAF) <b>0</b>	GND CON <b>121.9</b>
------------------------	---------------------------------------	--	-------------------------



ELEV 597	<b>D</b>	TDZE 591
----------	----------	----------

REIL Rwy 2, 12 and 20 **0**  
HIRL Rwy 12-30 **0**  
MIRL Rwy 2-20 **0**

FAF to MAP 4.3 NM

Knots	45	60	75	90	105
Min:Sec	5:44	4:18	3:26	2:52	2:27

1500	2300	CGT

#1300 when using Chicago Midway Intl altimeter setting.  
\*LOC only

WASTU INT I-GYY [5.7] RADAR

RONOY I-GYY [3.5]

\*I-GYY [2.6]

\*1240#

2000

126°

306°

2300

GS 3.00° HCH 57

1.1 NM	0.9 NM	2.3 NM
--------	--------	--------

CATEGORY	COPTER
S-ILS 30	791-¼ 200 (200-¼)
S-LOC 30	1240-¼ 649 (700-¼)

RONOY FIX MINIMUMS	
S-LOC 30	1000-¼ 409 (500-¼)

EC-2, 31 DEC 2020 to 28 JAN 2021

EC-2, 31 DEC 2020 to 28 JAN 2021