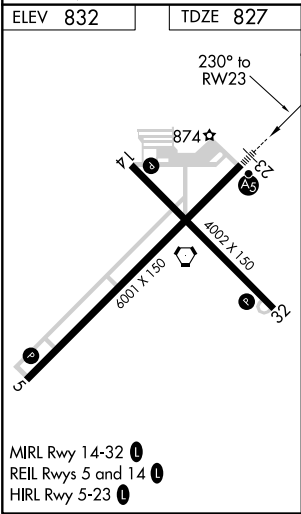
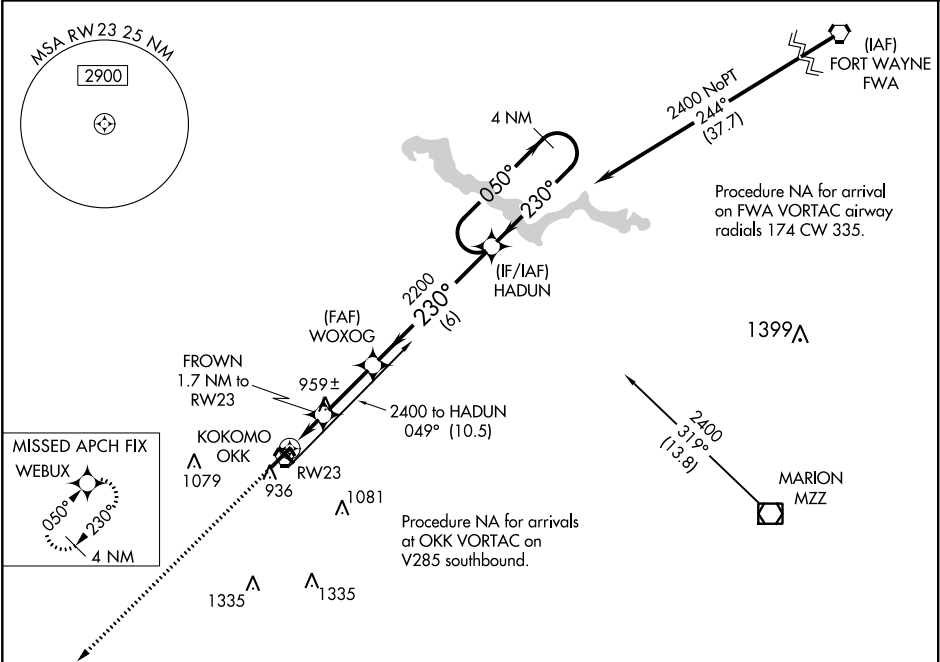


WAAS CH <b>40119</b> <b>W23A</b>	APP CRS <b>230°</b>	Rwy Idg TDZE Apt Elev	<b>6001</b> <b>827</b> <b>832</b>
--	------------------------	-----------------------------	---

RNAV (GPS) RWY 23

KOKOMO MUNI (OKK)

<div><div><div></div><div></div></div><div>For uncompensated Baro-VNAV systems, LNAV/VNAV NA below -16°C (4°F) or above 54°C (130°F). DME/DME RNP-0.3 NA.</div></div>	<div>MALSR<div></div></div>	MISSED APPROACH: Climb to 3000 direct WEBUX and hold.	
AWOS-3PT <b>113.5</b>	GRISSEM APP CON★ <b>121.05 338.275</b>	CLNC DEL <b>120.0</b>	UNICOM <b>123.0</b> (CTAF) <b>0</b>



3000 WEBUX		HADUN 4 NM Holding Pattern	
*LNAV only	FROWN 1.7 NM to RW23	WOXOG 2200	2400 050° 230° GP 3.00° TCH 44
	*1.1 NM to RW23	1400*	
	1.1 0.6 2.5 NM 6 NM		
CATEGORY	A	B	C D
LPV DA	1027-½ 200 (200-½)		
LNAV/VNAV DA	1224-⅞ 397 (400-⅞)		
LNAV MDA	1220-½ 393 (400-½)	1220-¾ 393 (400-¾)	
CIRCLING	1260-1 428 (500-1)	1300-1 468 (500-1)	1400-1½ 568 (600-1½) 1640-2½ 808 (900-2½)