

WAAS CH 82109 W05A	APP CRS 049°	Rwy Idg 9020 TDZE 578 Apt Elev 589
--	------------------------	---

RNAV (GPS) RWY 5

TERRE HAUTE RGNL (HUF')

RNP APCH.

▼

ASR

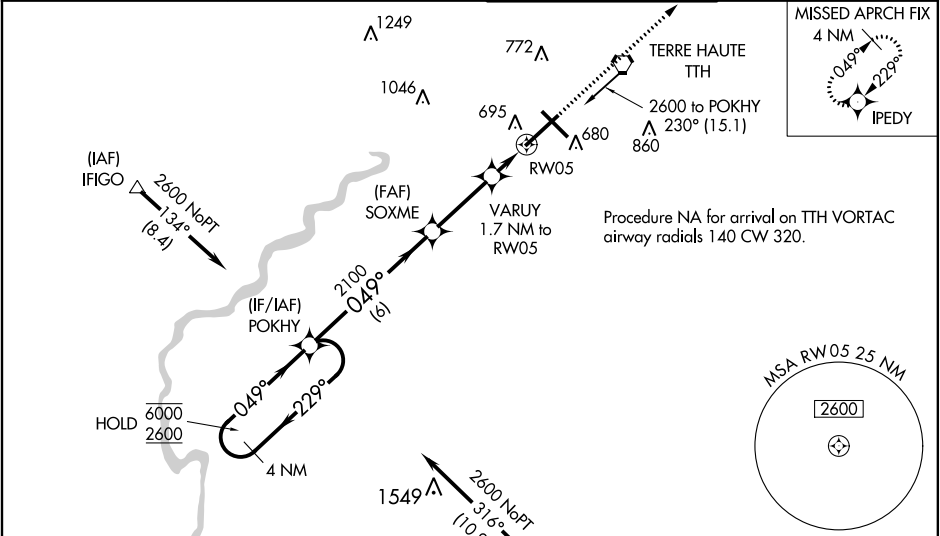
For uncompensated Baro-VNAV systems, LNAV/VNAV NA below -16°C (4°F) or above 47°C (116°F). VDP and Baro-VNAV NA when using Paris altimeter setting. When local altimeter setting not received, use Paris altimeter setting and increase all DA 61 feet, and all MDA 80 feet. Increase LPV visibility all Cats and LNAV Cat C visibility ¼ SM and Circling Cat C/D visibility ¼ SM. For inoperative ALS, increase LPV all Cats visibility to RVR 4500, LNAV/VNAV all Cats and LNAV Cat C/D visibility to RVR 5500, when using Paris altimeter setting increase LPV and LNAV/VNAV visibility all Cats to RVR 6000, increase LNAV Cat C/D visibility to 1 3⁄8 SM.

MALS

AS

MISSED APPROACH:
Climb to 2400 direct
IPEDY and hold.

ATIS 127.5 269.375	HULMAN APP CON 125.45 339.8	HULMAN TOWER 134.725 239.0	GND CON 121.6 348.6
------------------------------	---------------------------------------	--------------------------------------	-------------------------------



4 NM Holding Pattern POKHY		2400 IPEDY		
6000 2600		*LNAV only.		
GP 3.00° TCH 40		VARUY 1.7 NM to RW05		
2100		*1140		
6 NM		2.9 NM		
0.7 NM		1 NM		
CATEGORY	A	B	C	D
LPV DA	880/24 302 (300-½)			
LNAV/VNAV DA	929/40 351 (400-¾)			
LNAV MDA	940/24	362 (400-½)	940/35 362 (400-¾)	940/50 362 (400-1)
CIRCLING	1020-1 431 (500-1)	1040-1 451 (500-1)	1220-1¾ 631 (700-1¾)	1220-2 631 (700-2)

TERRE HAUTE, INDIANA
Orig-E 08NOV18

39°27'N-87°18'W

ELEV 589 TDZE 578

649 653 637 680± 652 661

TWR 637

9021 X 150 7200 X 150

049° to RW05

TERRE HAUTE RGNL (HUF')

RNAV (GPS) RWY 5