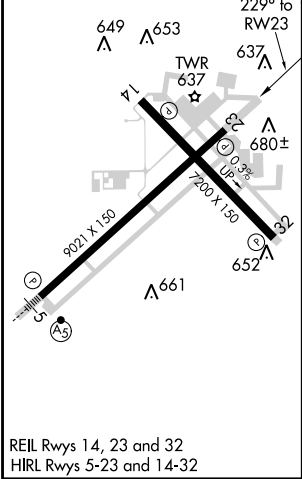
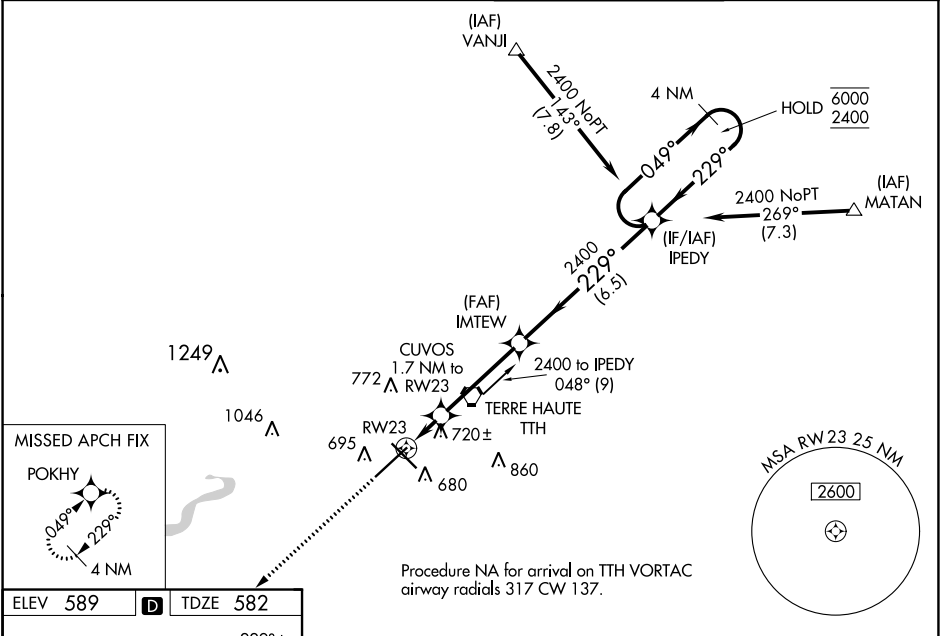


WAAS CH <b>72625</b> <b>W23A</b>	APP CRS <b>229°</b>	Rwy Idg TDZE <b>582</b> Apt Elev <b>589</b>
--	------------------------	---

RNAV (GPS) RWY 23  
TERRE HAUTE RGNL (HUF')

RNP APCH.	MISSED APPROACH: Climb to 2600 direct POKHY and hold.
-----------	---

ATIS <b>127.5 269.375</b>	HULMAN APP CON <b>125.45 339.8</b>	HULMAN TOWER <b>134.725 239.0</b>	GND CON <b>121.6 348.6</b>
------------------------------	---------------------------------------	--------------------------------------	-------------------------------



2600

↑

POKHY

✧

VGSI and RNAV glidepath not coincident (VGSI Angle 3.00/TCH 50).

4 NM Holding Pattern

\*LNAV only

CUVOS

1.7 NM to RW23

IMTEW

2400

IPEDY

\*1.2 NM to RW23

1160\*

2400

049° → 6000

← 229° 2400

GP 3.00° TCH 55

1.2 NM

0.5 NM

3.8 NM

6.5 NM

CATEGORY	A	B	C	D
LPV DA	782-¾	200 (200-¾)		
LNAV/VNAV DA	874-⅞	292 (300-⅞)		
LNAV MDA	980-1	398 (400-1)	980-1½	398 (400-1½)
CIRCLING	1020-1 431 (500-1)	1040-1 451 (500-1)	1220-1¾ 631 (700-1¾)	1220-2 631 (700-2)