

WAAS CH <b>58003</b> <b>W14A</b>	APP CRS <b>136°</b>	Rwy Idg TDZE <b>583</b> Apt Elev <b>583</b>
--	------------------------	---

RNAV (GPS) RWY 14

FREEMAN MUNI (SE,R)

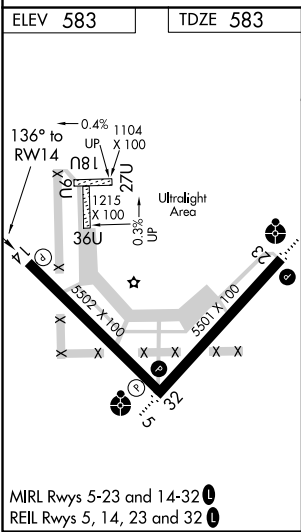
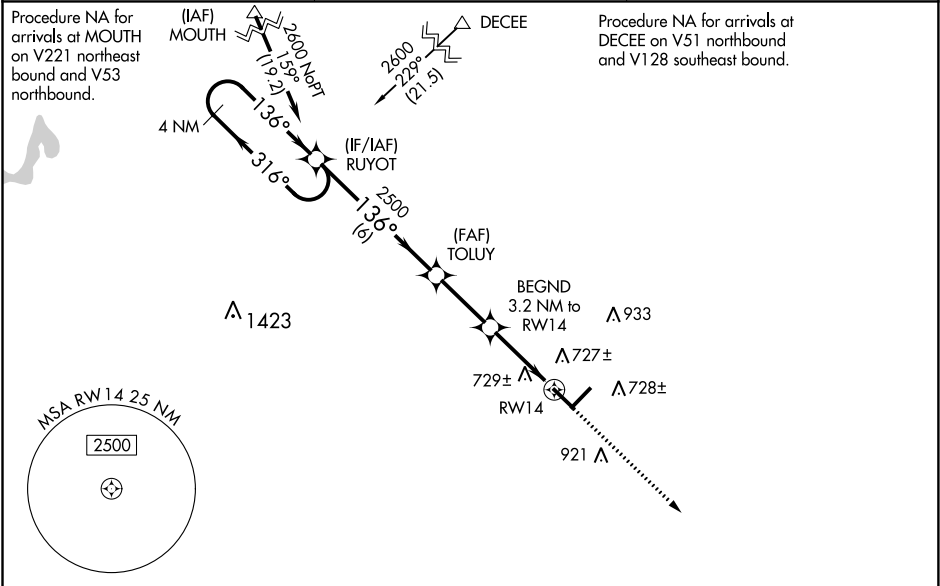
▼

NA

Baro-VNAV and VDP NA when using Louisville Muhammad Ali Intl altimeter setting. For uncompensated Baro-VNAV systems, LNAV/VNAV NA below -16°C (4°F) or above 54°C (130°F). When local altimeter setting not received, use Louisville Muhammad Ali Intl altimeter setting and increase all DA 117 feet and all MDA 120 feet; increase LPV all Cats, LNAV/VNAV all Cats and Circling Cat C/D visibility ½ mile, and LNAV Cat C/D visibility ¼ mile. DME/DME RNP-0.3 NA. Helicopter visibility reduction below ¾ SM NA.

MISSED APPROACH:  
Climb to 2400 direct  
ZEKAM and hold.

AWOS-3 <b>119.425</b>	INDIANAPOLIS CENTER <b>124.775 269.45</b>	UNICOM <b>122.8 (CTAF) 0</b>
--------------------------	--	---------------------------------



4 NM Holding Pattern RUYOT

VGSI and RNAV glidepath not coincident (VGSI Angle 3.00/TCH 24).

2400 ZEKAM

\*LNAV only.

GP 3.00° TCH 40	2600	316°	136°	2500	136°	2500	1640	2500	1.2 NM to RWY 14	RWY 14
				6 NM	2.7 NM		2 NM	1.2 NM		
CATEGORY	A		B		C		D			
LPV DA	860-1		277 (300-1)							
LNAV/VNAV DA	1037-1½		454 (500-1½)							
LNAV MDA	980-1		397 (400-1)		980-1 ⅛		397 (400-1 ⅛)			
CIRCLING	1040-1 457 (500-1)	1080-1 497 (500-1)	1300-2 717 (800-2)	1300-2 ¼ 717 (800-2 ¼)						