

WAAS CH 42512 W22A	APP CRS 221°	Rwy Idg TDZE 422 Apt Elev 422	8021
--	------------------------	---	-------------

RNAV (GPS) RWY 22

EVANSVILLE RGNL (EVV)

ASR

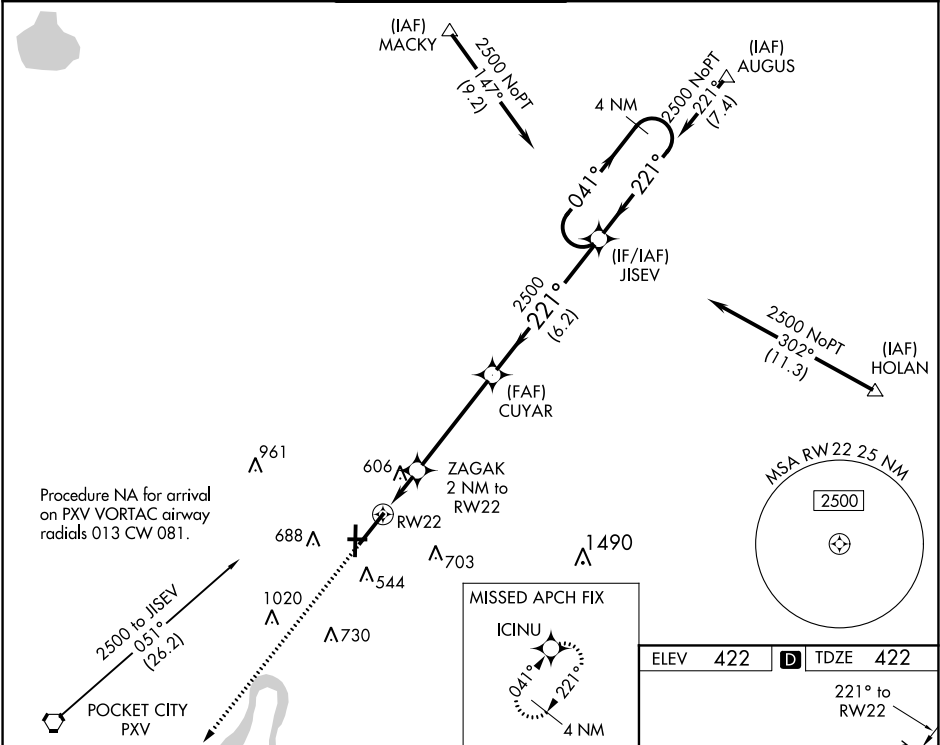
For uncompensated Baro-VNAV systems, LNAV/VNAV NA below -15°C (5°F) or above 54°C (130°F). DME/DME RNP-0.3 NA. Circling Rwy 9 NA at night.
** RVR 1800 authorized with the use of FD or AP or HUD to DA.

MALS

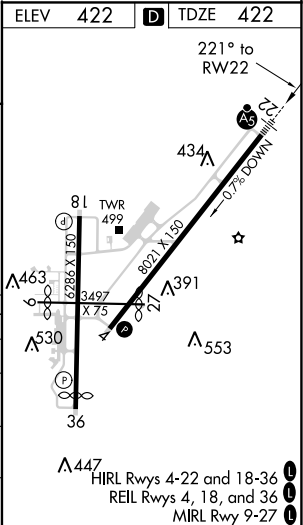
MISSED APPROACH:

Climb to 2500 direct ICINU and hold.

ATIS 120.2	EVANSVILLE APP CON ★ 124.025 290.9	EVANSVILLE TOWER ★ 118.7 (CTAF) 257.8	GND CON 121.9	CLNC DEL 126.6	UNICOM 122.95
----------------------	--	---	-------------------------	--------------------------	-------------------------



				4 NM Holding Pattern
*LNAV only	*1.2 NM to RW22	2500	2500	041° → 2500 ← 221°
	RW22	*1100		GP 3.00° TCH 50
	1.2 NM	0.8	4.4 NM	6.2 NM
CATEGORY	A	B	C	D
LPV DA	**622/24		200 (200-½)	
LNAV/VNAV DA	840/45		418 (500-¾)	
LNAV MDA	860/24	438 (500-½)	860/40	438 (500-¾)
CIRCLING	920-1 498 (500-1)	1040-1 618 (700-1)	1040-1¾ 618 (700-1¾)	1040-2 618 (700-2)



EC-2, 31 DEC 2020 to 28 JAN 2021

EC-2, 31 DEC 2020 to 28 JAN 2021