

PERU. INDIANA

TACAN or VOR RWY 5

VORTAC GUS 108.45 Chan 21 (Y)	APCH CRS 052°	Rwy Idg 12,501 TDZE 811 Arpt Elev 811
---	-------------------------	--

AL-470 [USAF]

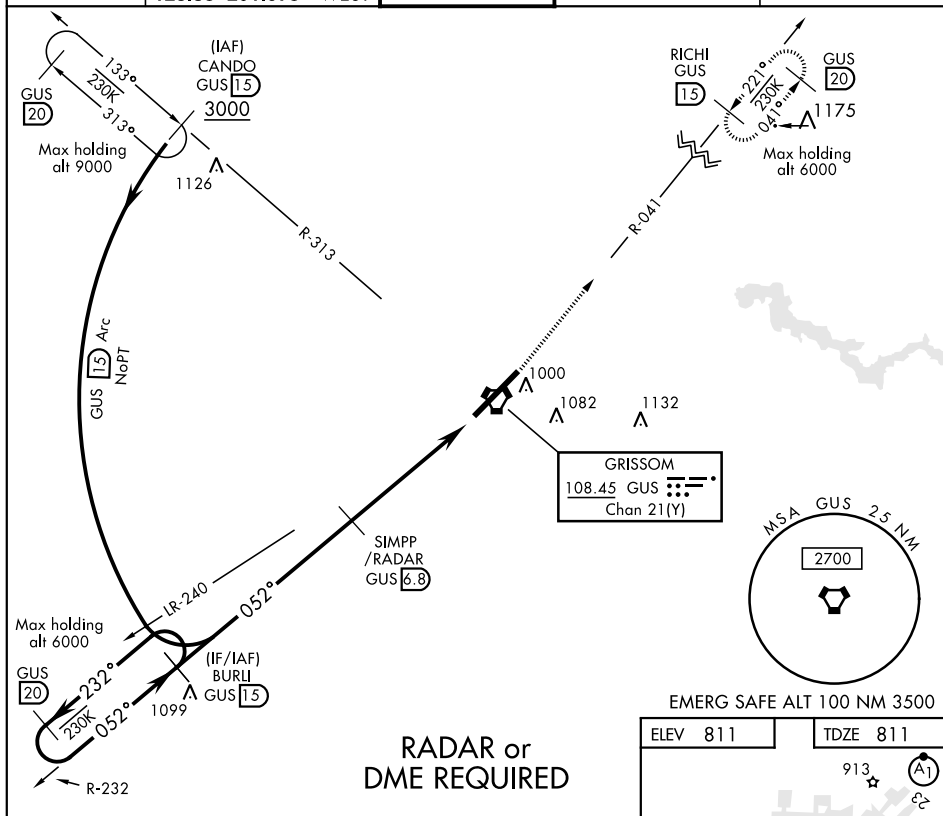
GRISSOM ARB (KGUS)

* When ALS inop, increase RVR to 55 and vis to 1 mile.



MISSED APPROACH: Climb to 3000 on the GUS VORTAC R-041 to RICHI (GUS R-041/15 DME) and hold.

ATIS	GRISSOM APP CON		GRISSOM TOWER ★	GND CON	CLNC DEL
108.45 270.8	121.05 338.275	EAST	133.7 290.45	128.425 275.8	123.7 318.2
	123.85 291.675	WEST			



EC-2, 31 DEC 2020 to 28 JAN 2021

BURLI R-232
3000 ← 232° (15)
052° → 3000
052° → 2500
2.61° TCH 59

SIMPP /RADAR
6.8

3000
↑

GUS
↑

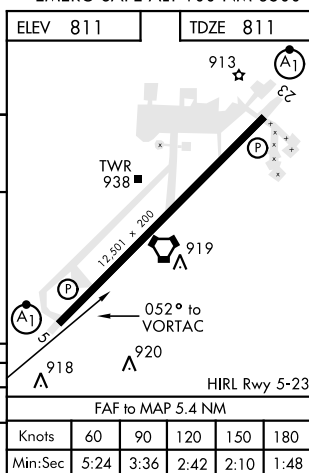
RICH R-041
15

2.1
↓
HECMU

1.4
↓
VORTAC

5.4 NM
5 NM

CATEGORY	A	B	C	D	E
S-TAC/ VOR 5 *	1180/24	369 (400-½)	1180/40	369	(400-¾)
C CIRCLING	1340-1	529 (600-1)	1400-1½ 589 (600-1½)	1400-2 589 (600-2)	1440-2½ 629 (700-2½)



PERU, INDIANA

40°39'N-86°09'W

GRISSOM ARB (KGUS)

Amdt 8 06DEC18

TACAN or VOR RWY 5