

PERU, INDIANA

RNAV (GPS) RWY 5

APCH CRS	Rwy Idg	12,501
046°	TDZE	811
	Arpt Elev	811

AL-470 (USAF)

GRISSOM ARB (KGUS)

* When ALS inop, increase CAT AB RVR to 55 and vis to 1 mile, CAT CDE RVR to 60 and vis to 1 1/8 miles.

ALSF-1

MISSED APPROACH: Climb to 3000 direct RILOE and hold.

ATIS
108.45 270.8

APP CON/DEP CON
121.05 338.275 E
123.85 291.675 W

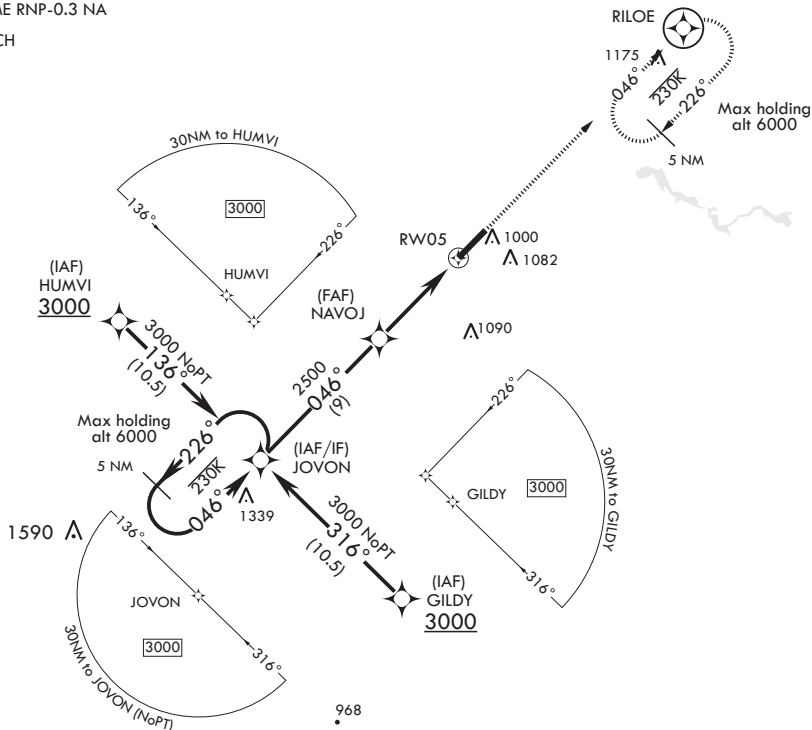
TOWER
133.7 290.45

GND CON
128.425 275.8

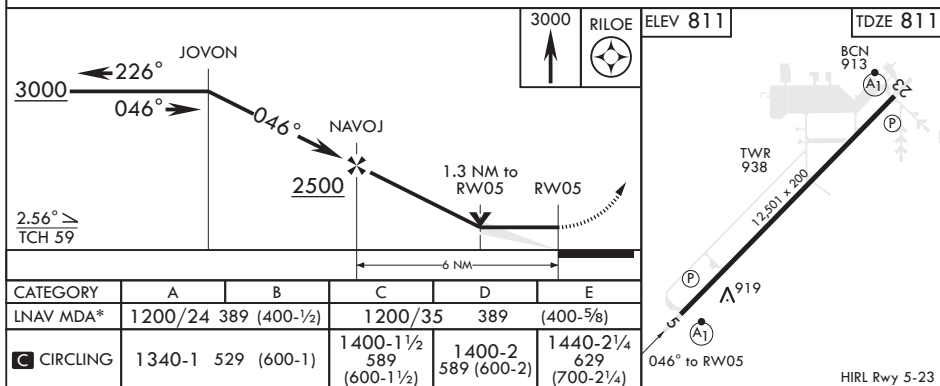
CLNC DEL
123.7 318.2

DME/DME RNP-0.3 NA

RNP APCH



EMERG SAFE ALT 100 NM 3500



PERU, INDIANA

40°39'N - 86°09'W

GRISSOM ARB (KGUS)

Amdt 6 31JAN19

RNAV (GPS) RWY 5

EC-2, 31 DEC 2020 to 28 JAN 2021

EC-2, 31 DEC 2020 to 28 JAN 2021