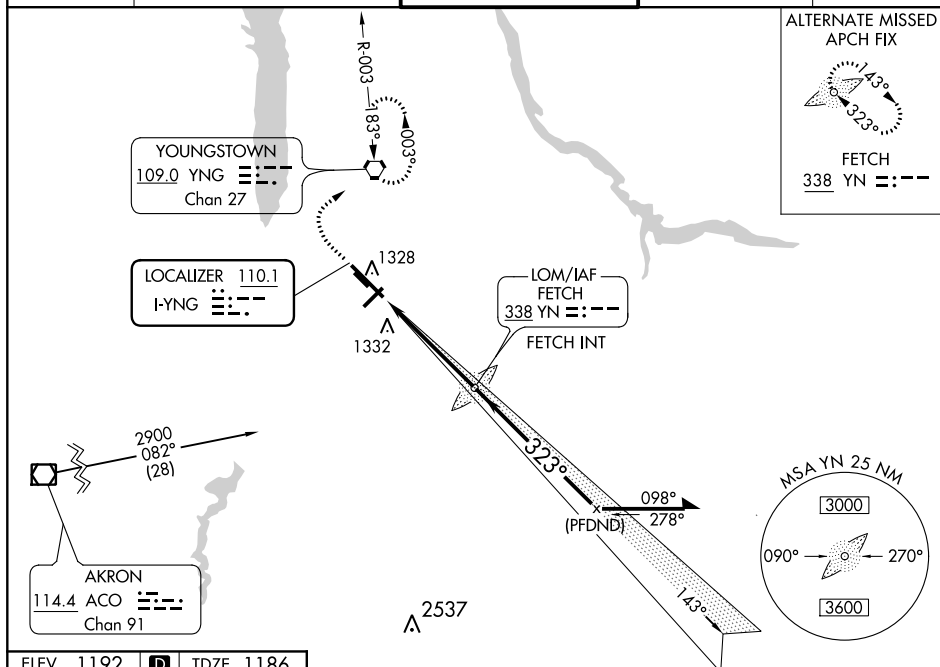


ILS or LOC RWY 32
YOUNGSTOWN-WARREN RGNL (YNG)

MISSED APPROACH: Climb to 1800 then climbing right turn to 2900 direct YNG VORTAC and hold, continue climb-in-hold to 2900.

CLNC DEL
118.25

FAF to MAP 4.7 NM

Knots	60	90	120	150	180
Min:Sec	4:42	3:08	2:21	1:53	1:34

The diagram shows a ship's path starting from a black bar at the bottom left. A dashed line indicates a bearing change to 1800 (up arrow). A solid line indicates a bearing change to 2900 (curved arrow). A pentagon symbol is labeled 'YNG'. The ship's path is a solid line labeled '2800' with a lightning bolt symbol. A vertical line is labeled 'YN LOM/INT' with the value '2726'. A line segment is labeled '143°' and 'Remain within 10 NM'. Another line segment is labeled '323°' and '2900'. The distance from the start to the vertical line is '4.7 NM'. The final bearing is 'GS 3.00° TCH 35'.

CATEGORY	A	B	C	D
S-ILS 32*	1386/24		200 (200-½)	
S-LOC 32	1640/24	454 (500-½)	1640/45	454 (500-¾)
CIRCLING	1640-1 448 (500-1)	1660-1 468 (500-1)	1740-1½ 548 (600-1½)	1760-2 568 (600-2)

YOUNGSTOWN-WARREN RGNI (YNG)

ILS or LOC RWY 32