

WAAS CH 50306 W05B	APP CRS 050°	Rwy Idg 10000 TDZE 791 Apt Elev 796
--	------------------------	--

RNAV (GPS) Y RWY 5R

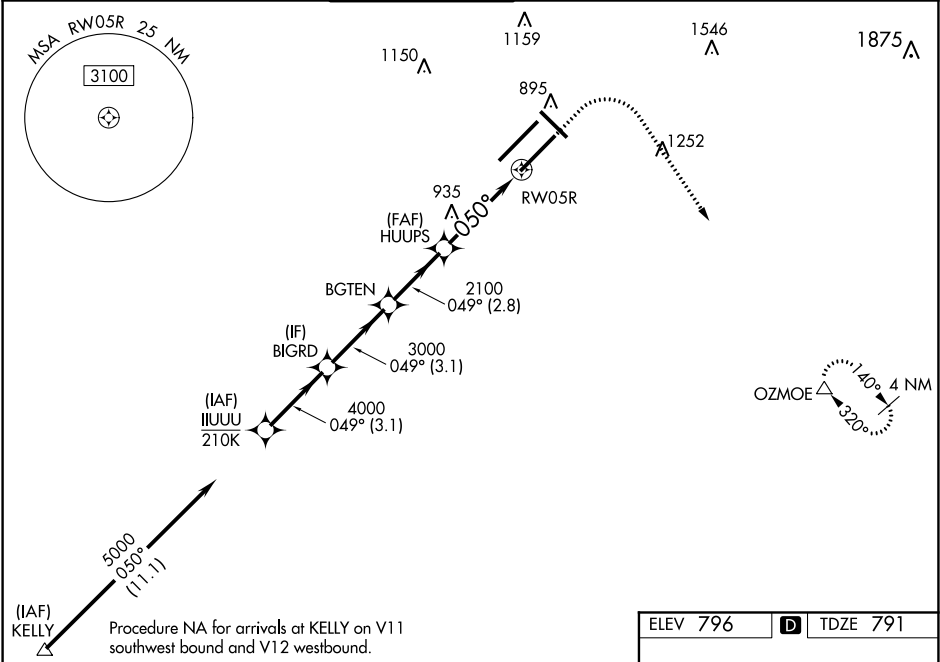
INDIANAPOLIS INTL (IND)

▼ For uncompensated Baro-VNAV systems, LNAV/VNAV NA below -18°C (0°F) or above 54°C (130°F). DME/DME RNP-0.3 NA. Simultaneous approach authorized. LNAV procedure NA during simultaneous operations. Use of FD or AP providing RNAV track guidance required during simultaneous operations.

ALSF-2

MISSED APPROACH:
Climb to 1500 then climbing right turn to 3000 direct OZMOE and hold.

D-ATIS 134.25	INDIANAPOLIS APP CON 128.175 317.8	INDY TOWER 120.9 257.8	GND CON 121.9	CLNC DEL 128.75 257.8	CPDLC
-------------------------	--	----------------------------------	-------------------------	---------------------------------	-------



VGSIs and RNP glidepath not coincident (VGSi Angle 3.00/TCH 71).				
IIUUU				
BIGRD				
5000 049°				
4000				
3000				
GP 3.00° TCH 50				
3.1 NM 3.1 NM 2.8 NM 2.9 NM 1.1 NM				
CATEGORY A B C D				
LPV DA 991/18 200 (200-½)				
LNAV/VNAV DA 1172/40 381 (400-¾)				
LNAV MDA 1220/24 429 (500-½) 1220/40 429 (500-¾)				
CIRCLING 1420-1 624 (700-1) 1420-1¾ 624 (700-1¾) 1560-2½ 764 (800-2½)				

