



APP CRS	Rwy ldg	7278
140°	TDZE	796
	Apt Elev	796

RNAV (RNP) Z RWY 14
INDIANAPOLIS INTL (IND)

RNP AR APCH.			<div>MALSR</div> <div></div>	MISSED APPROACH: Climb to 3000 on track 140° to OZMOE and hold.		
<div><div></div>For uncompensated Baro-VNAV systems, procedure NA below -18°C or above 54°C.</div>						
<div>D-ATIS</div> <div>134.25</div>	<div>INDIANAPOLIS APP CON</div> <div>128.175 317.8</div>	<div>INDY TOWER</div> <div>120.9 257.8</div>	<div>GND CON</div> <div>121.9</div>	<div>CLNC DEL</div> <div>128.75 257.8</div>	CPDLC	

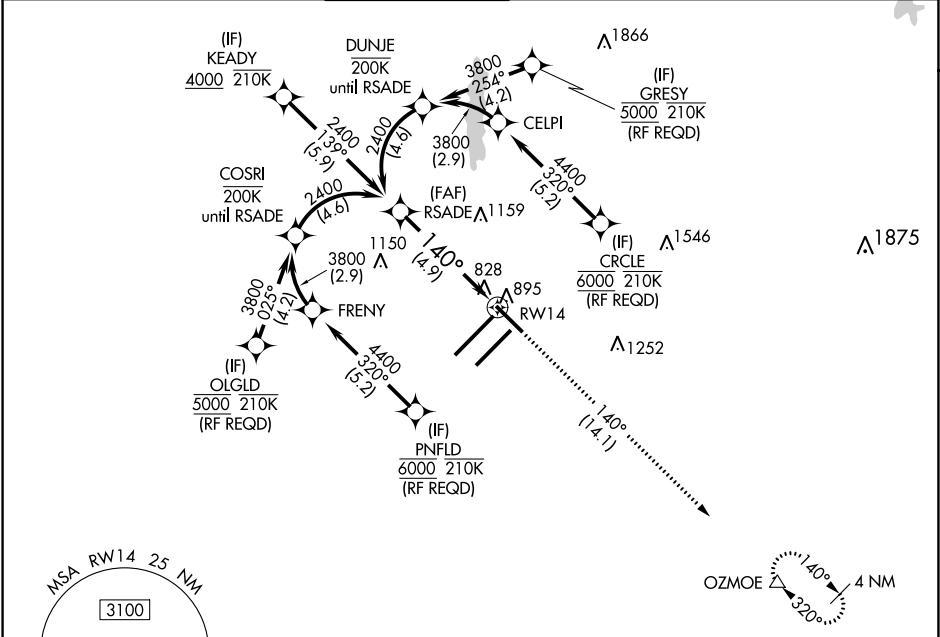


Diagram illustrating the approach path and holding pattern for RW14. The approach is a straight-in approach with a 140° heading. The altitude is 2400 feet. The distance to the runway is 4.9 NM. The holding pattern is a 140° turn. The diagram also shows the OZMOE holding pattern. The diagram includes the runway (RW14) and the OZMOE holding pattern. The diagram also shows the 140° heading to RW14 and the OZMOE holding pattern.

Diagram illustrating the approach path and holding pattern for RW14. The approach is a straight-in approach with a 140° heading. The altitude is 2400 feet. The distance to the runway is 4.9 NM. The holding pattern is a 140° turn. The diagram also shows the OZMOE holding pattern. The diagram includes the runway (RW14) and the OZMOE holding pattern. The diagram also shows the 140° heading to RW14 and the OZMOE holding pattern.

CATEGORY	A	B	C	D
RNP 0.14 DA	1135/26 339 (400-½)			
RNP 0.30 DA	1192/45 396 (400-¾)			

AUTHORIZATION REQUIRED

Diagram illustrating the approach path and holding pattern for RW14. The approach is a straight-in approach with a 140° heading. The altitude is 2400 feet. The distance to the runway is 4.9 NM. The holding pattern is a 140° turn. The diagram also shows the OZMOE holding pattern. The diagram includes the runway (RW14) and the OZMOE holding pattern. The diagram also shows the 140° heading to RW14 and the OZMOE holding pattern.

Diagram illustrating the approach path and holding pattern for RW14. The approach is a straight-in approach with a 140° heading. The altitude is 2400 feet. The distance to the runway is 4.9 NM. The holding pattern is a 140° turn. The diagram also shows the OZMOE holding pattern. The diagram includes the runway (RW14) and the OZMOE holding pattern. The diagram also shows the 140° heading to RW14 and the OZMOE holding pattern.

CATEGORY	A	B	C	D
RNP 0.14 DA	1135/26 339 (400-½)			
RNP 0.30 DA	1192/45 396 (400-¾)			

AUTHORIZATION REQUIRED

HRL all Rwys
TDZ/CL Rwys 5L and 5R