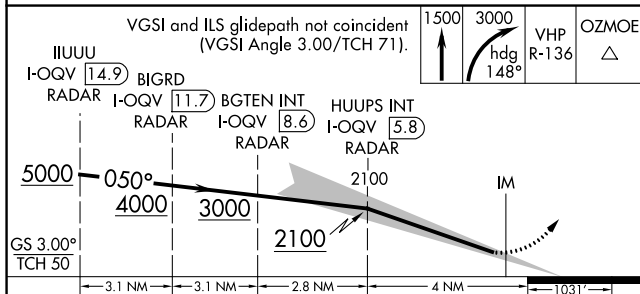


ILS RWY 5R (SA CAT I)  
INDIANAPOLIS INTL (IND)

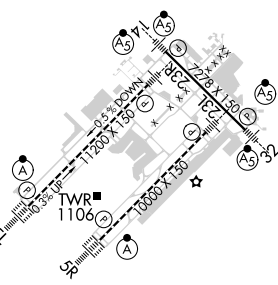
**MISSED APPROACH:** Climb to 1500 then climbing right turn to 3000 on heading 148° and on VHP VORTAC R-136 to OZMOE INT/VHP 20.1 DME and hold.

1500 ↑	3000 hdg 148°	VHP R-136	OZMOE △
-----------	---------------------	--------------	------------



CATEGORY	A	B	C	D
S-ILS 5R	RA 163/14 150 DA 941			

SA CATEGORY I ILS SPECIAL AIRCREW  
& AIRCRAFT CERTIFICATION REQUIRED



HIRL all Rwy's  
TDZ/CL Rwy's 5L and 5R