

**ILS RWY 5R (CAT II & III)**  
**INDIANAPOLIS INTL (IND)**

ALSF-2

ALSF-2

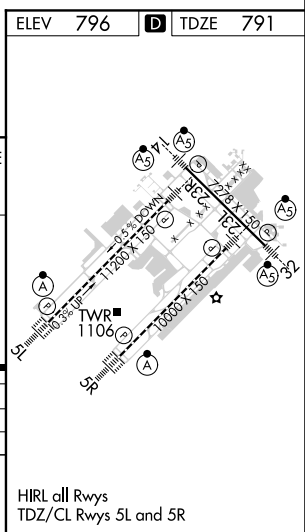


Diagram illustrating the ILS approach for Runway 109/12 at OZMCE. The diagram shows the approach path, altitudes, and distances.

**Approach Path and Altitudes:**

- Initial Altitude: 5000
- Altitude 1: 4000
- Altitude 2: 3000
- Altitude 3: 2100
- Final Altitude: 1031

**Distances:**

- 3.1 NM
- 2.8 NM
- 4 NM
- 1031'

**Angles and Bearings:**

- 050°
- GS 3.00°
- TCH 50
- 148°
- 909

**Diagram Labels:**

- I-0QV
- R-136
- IM
- 1031'

**Diagram Title:** CATEGORY II & III ILS - SPECIAL AIRCREW & AIRCRAFT CERTIFICATION REQUIRED

EC-2, 31 DEC 2020 to 28 JAN 2021

EC-2. 31 DEC 2020 to 28 JAN 2021