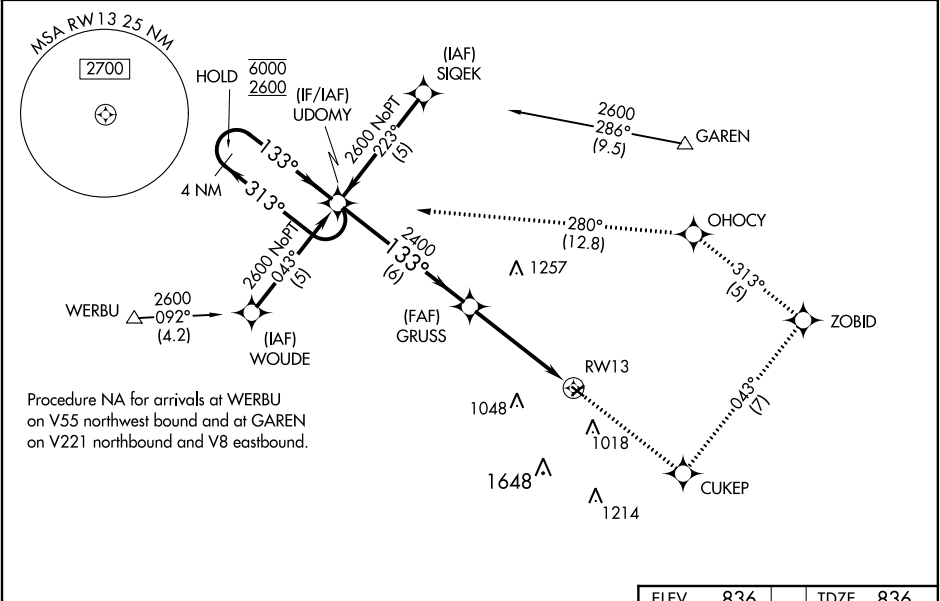


WAAS CH 69220 W13A	APP CRS 133°	Rwy Idg TDZE 836 Apt Elev 836
--	------------------------	---

RNAV (GPS) RWY 13

SMITH FIELD (SMD)

RNP APCH. ▼ Procedure NA at night. Rwy 13 helicopter visibility reduction below 1 SM NA. ▲ NA For uncompensated Baro-VNAV systems, LNAV/VNAV NA below -16°C or above 54°C. When local altimeter setting not received, use Fort Wayne Intl altimeter setting: ❄ -22°C increase LPV DA to 1162 feet; LNAV/VNAV DA to 1435 feet; increase all MDA 40 feet and LNAV Cat C visibility ¼ SM. Baro-VNAV NA when using Fort Wayne Intl altimeter setting.		MISSED APPROACH: Climb to 2600 direct CUKEP and on track 043° to ZOBID and on track 313° to OHOCY and on track 280° to UDOMY and hold.
AWOS-3 124.55	FORT WAYNE APP CON 127.2 284.6	UNICOM 122.8 (CTAF) 0



4 NM Holding Pattern		UDOMY	GRUSS	RWY 13
6000 2600		313°	133°	2400
GP 3.00° TCH 40		6 NM	4.7 NM	
CATEGORY	A	B	C	D
LPV DA	1135-1	299 (300-1)		NA
LNAV/VNAV DA	1408-2	572 (600-2)		NA
LNAV MDA	1340-1	504 (600-1)	1340-1½ 504 (600-1½)	NA
CIRCLING	1400-1	564 (600-1)	1940-3 1104 (1200-3)	NA

ELEV 836

TDZE 836