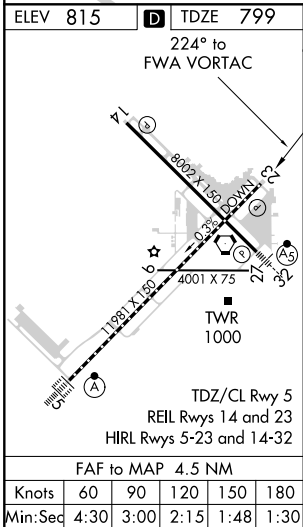
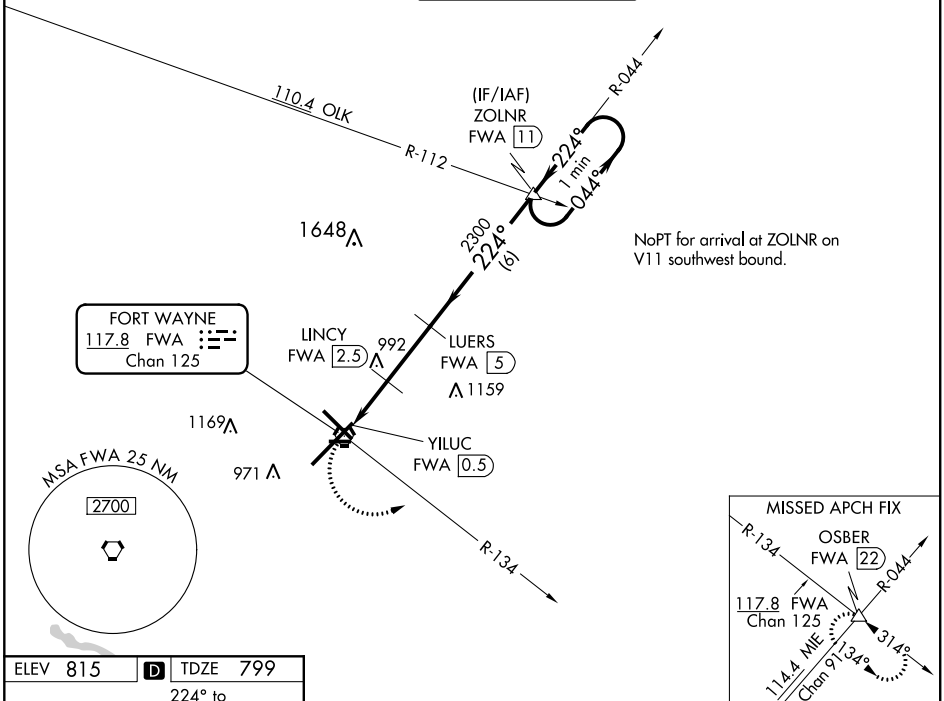



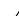

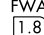



VORTAC FWA	APP CRS	Rwy Idg	11981
117.8	224°	TDZE	799
Chan 125		Apt Elev	815

VOR or TACAN RWY 23

FORT WAYNE INTL (FWA)

<div><div><div>V</div><div>ASR</div></div></div>		MISSED APPROACH: Climbing left turn to 3000 on FWA VORTAC R-134 to OSBER INT/FWA 22 DME and hold.		
ATIS	FORT WAYNE APP CON	FORT WAYNE TOWER	GND CON	CLNC DEL
121.25 360.825	127.2 284.6	119.1 269.325	121.9 348.6	124.75



<div>3000</div> <div> FWA R-134</div>		<div>OSBER</div> <div></div>	<div>LUERS</div> <div>FWA 5</div>		<div>ZOLNR</div> <div>FWA 11</div>	<div>One Minute Holding Pattern</div>	
<div> YILUC FWA 0.5</div>		<div>FWA 1.8</div>	<div>LINCYN FWA 2.5</div>	<div> 224°</div>		<div>044° → 3000</div> <div>← 224°</div>	
<div> 3.04°</div>		<div>TCH 55</div>	<div>1400</div>	<div>2300</div>	<div>VGSI and descent angles not coincident (VGSI Angle 3.00/TCH 76).</div>		
<div>1.3</div>		<div>0.7 NM</div>	<div>2.5</div>	<div>6 NM</div>			
CATEGORY	A		B	C	D	E	
S-23	1400/55		601 (600-1)	1400-1¾ 601 (600-1¾)			
 CIRCLING	1400-1		585 (600-1)	1420-1¾ 605 (700-1¾)	1520-2¼ 705 (800-2¼)	1520-2½ 705 (800-2½)	
LINCYN FIX MINIMUMS							
S-23	1300/55		501 (500-1)	1300-1⅜ 501 (500-1⅜)			
 CIRCLING	1300-1		485 (500-1)	1420-1¾ 605 (700-1¾)	1520-2¼ 705 (800-2¼)	1520-2½ 705 (800-2½)	