

WAAS CH 69599 W23A	APP CRS 230°	Rwy Idg 11981 TDZE 799 Apt Elev 815
--	------------------------	--

RNAV (GPS) RWY 23



For uncompensated Baro-VNAV systems, LNAV/VNAV NA below -16°C (4°F) or above 47°C (116°F), DME/DME RNP-0.3 NA.

MISSED APPROACH: Climb to 3000
direct EBACO and hold.

ATIS	FORT WAYNE APP CON	FORT WAYNE TOWER	GND CON	CLNC DEL
121.25 360.825	127.2 284.6	119.1 269.325	121.9 348.6	124.75

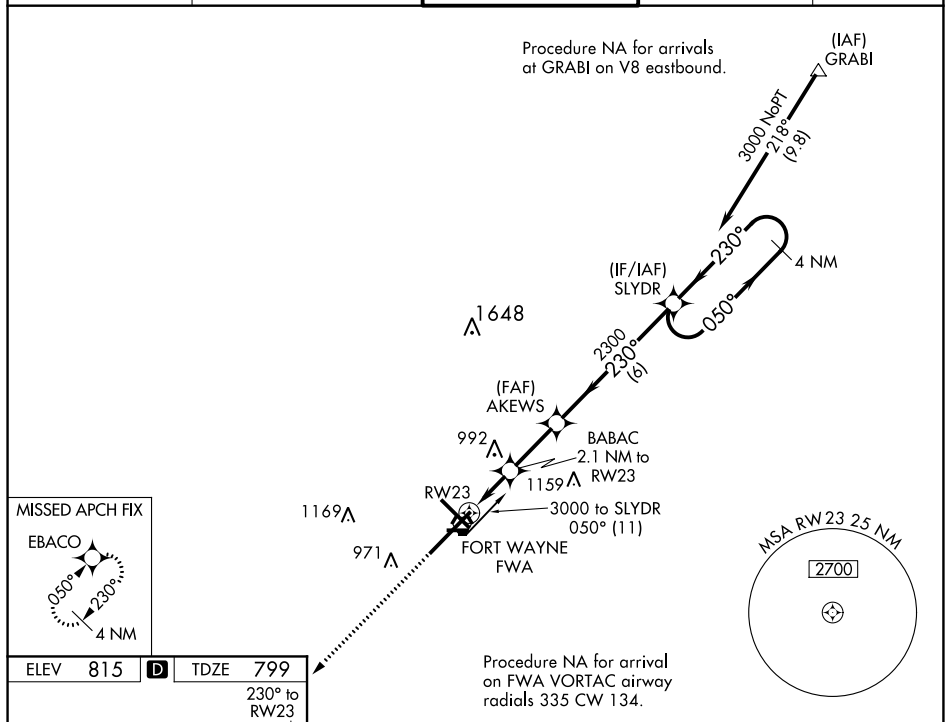


Diagram illustrating the RW23 approach procedure. The diagram shows the 4 NM Holding Pattern at 3000 feet. The approach starts at 3000 feet, descends to 2300 feet at AKEWS, then to 1520 feet at RW23. The final approach segment is 1.3 NM to RW23. The diagram also shows the VGS1 and RNAV glidepaths, which are not coincident (VGS1 Angle 3.00/TCH 76). The diagram includes various navigation aids like EBACO, BABAC, and SLYDR, and distances to various points like 3000, 2300, 1520, and 1000 feet. The diagram also shows the TDZ/CL Rwy 5, REIL Rwy 14 and 23, and HIRL Rwy 5-23 and 14-32.