

RNAV (RNP) Y RWY 24R

JAMES M COX DAYTON INTL (DAY)

RNP AR APCH.

**T** For inop ALS, increase RNP 0.10 all Cats visibility to RVR 5500 and RNP 0.30 all Cats visibility to 1 $\frac{3}{8}$  SM. For uncompensated Baro-VNAV systems, procedure NA below -19°C or above 54°C.

MALSR



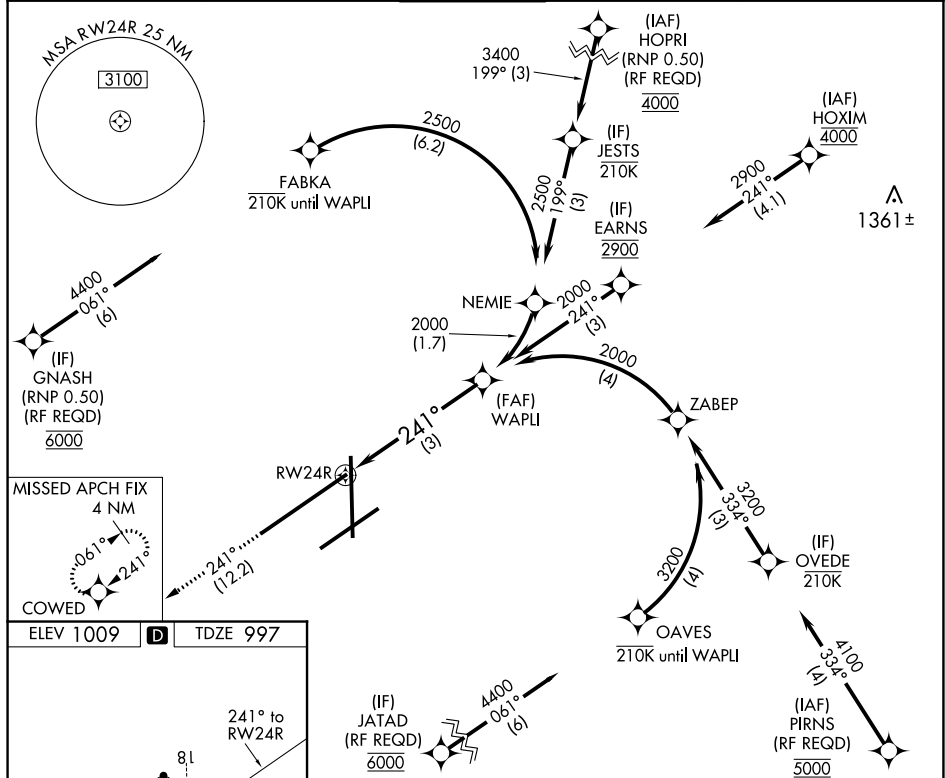
**MISSED APPROACH:** Climb to 3000 on track 241° COWD and hold.

ATIS  
125.8

COLUMBUS APP CON  
118,425 323.15

DAYTON TOWER  
119.9 257.7

GND CON  
121.9

CLNC DEL  
121.75

ELEV 1009	<b>D</b>	TDZE 997
-----------	----------	----------

3000		COWED	See planview for multiple IF locations.
------	--	-------	---

WAPL  
|  
2000

2000  
GP 3.00°  
TCH 55

CATEGORY	A	B	C	D
RNP 0.10 DA		1334/35	337 (400-%)	
RNP 0.30 DA		1418/50	421 (500-1)	

**AUTHORIZATION REQUIRED**

DAYTON, OHIO  
Orig-C 16AUG18

JAMES M COX DAYTON INTL (DAY)  
39°54'N-84°13'W **RNAV (RNP) Y RWY 24R**

EC-2, 31 DEC 2020 to 28 JAN 2021